

FALL '26 MOVE-IN GUIDE

We would like to welcome you to Florida Agricultural & Mechanical University. Soon you will be moving into your home away from home. We are very excited to have you staying with us this year, and hope that you will find the answer to many of your questions regarding Move-In.

WHEN YOU ARRIVE

All residents will move in during their assigned time block. Time blocks will be between 8:00AM until 6:00PM by appointment only. More information forthcoming.

Reserved Fall '26 residents are now able to schedule their Fall '26 Move-In appointment time via the Housing Portal. [CLICK TO VIEW GUIDE](#)

If you notice damage or issues in your room after moving in, you must submit a Maintenance request within 24 hours to address the issue. If you do not submit a Maintenance request, you could potentially be charged for preexisting damages after checkout. To submit a maintenance request, you must email: housingmaintenance@fam.u.edu.



MISSION

The mission of FAMU Housing is to promote a safe, clean, service-oriented, efficiently managed, nurturing living learning environment that is conducive to students' academic pursuits and personal growth while fostering a sense of community, civic responsibility, and an appreciation of others.

The **RATTLER** Living Experience encourages students to develop...

Collegiality, Excellence, Caring, Diversity, Respect, and Integrity

WE ARE HOUSING

FAMU

FLORIDA A&M UNIVERSITY
UNIVERSITY HOUSING



1735 ALTHEA GIBSON WAY, SUITE 305 | FAMU.EDU/HOUSING | PHONE: 850-599-3651 | @FAMUHOUSING1887

SAFETY

EMERGENCY PLANNING

FAMU has officers working throughout the campus to ensure student safety. In case of an unforeseen emergency, an emergency preparedness kit is recommended for students moving into a residence hall or apartment. Contact: (850) 599 -3256 ~ famupol@famuedu ~ famuedu/publicsafety



FAMU ALERT

Communications system that provides timely and accurate information about emergency situations .

PREPARE FOR WEATHER

BE INFORMED

Review FAMU emergency procedures at emergency.famuedu. Updates will be communicated through the radio and the emergency notification system.

FILL TANK

In case there is an emergency evacuation, any resident who owns a vehicle should have the gas tank filled.

BUILD A HURRICANE KIT

Recommended supplies are: water, canned food, battery-powered radio, flashlight, portable charger, first aid kit and cash.

CLEAR REFRIGERATORS & FREEZERS

The items in your refrigerator and freezer may spoil if power is lost.



Campus Safety Notice: Prohibited Devices for All Incoming Students

Welcome to Florida A&M University! As you prepare for move-in, it's important to be aware of our policies regarding certain personal transportation devices. To ensure the safety and well-being of our campus community, the following devices are prohibited on all FAMU campuses:

- Electric scooters
- E-bikes
- gas-powered vehicles
- Hoverboards
- Self-balancing scooters
- Segways
- Any similar devices powered by lithium-ion batteries

This policy encompasses the use, storage, and charging of these devices across all campus areas, including roadways, walkways, parking lots, green spaces, university buildings, residence halls, and facilities.

Why This Policy Is in Place

The primary concern leading to this prohibition is safety. Devices powered by lithium-ion batteries have been associated with fire hazards. For instance, in New York City, fires caused by such batteries increased from 28 incidents in 2019 to 216 in 2022, resulting in injuries and fatalities. These incidents highlight the potential risks associated with charging and storing these devices indoors.

FAMU's Housing Student Handbook explicitly states that due to fire risks, motorized vehicles—including hoverboards, self-balancing scooters, and similar devices—may not be operated, charged, or stored inside any residence hall.

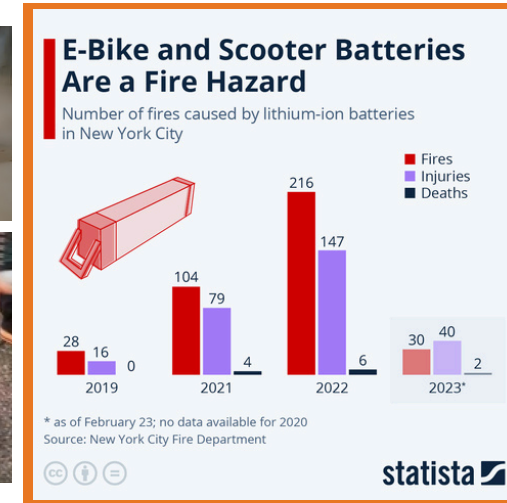
What This Means for Students and Parents

- Do Not Bring Prohibited Devices: Please refrain from bringing electric scooters, e-bikes, hoverboards, or similar devices to campus.
- No Exceptions: These devices are not allowed in any campus areas, including dormitories and academic buildings.
- Alternative Transportation: Consider traditional bicycles or walking as safe and approved means of transportation on campus.

We appreciate your cooperation in adhering to these guidelines, which are in place to ensure a safe and secure environment for all members of the FAMU community.

For more information, please refer to the FAMU Housing Student Handbook or contact the Office of Student Affairs.

Thank you for your attention to this important matter, and welcome to the Rattler family!



WHAT TO BRING

Getting Around Campus

- Rattler Card - You will use it for check-in, dining & getting into your residence hall.
- Key ring/card holder
- Moving supplies such as carts, dollies, boxes, etc. plastic or tarp (in case of rain)
- Cleaning supplies (Sanitizer, disinfectant) Masks/PPE

Laundry & Cleaning

- High-efficiency laundry detergent
- Clothes hamper
- Iron/ironing board
- Hangers
- Trash liners
- Small vacuum
- Air freshener
- Toiletries including toilet paper
- Shower caddy and shower shoes for residents using community bathrooms

Personal Decor

- Lamp/desk organizers
- Computer/laptop
- Closet organizers
- Food/eating utensils
- Surge protector
- Bicycle lock

No nails, screws, or staples, only use blue painters tape or Command Strips

Linen

- Pillow Blanket, quilt, or comforter
- Pillow top or egg carton cushion
- Mattress pad
- Towels & Washcloths
- Twin XL Sheets (Double XL Sheets for Rattler Pointe)

WHAT NOT TO BRING

- Tobacco - FAMU is a tobacco-free campus, this includes use of electronic cigarettes and vape pens
- Extension cords – Fire Marshal prohibits use of extension cords
- Multi-plug adapters without approved surge protectors
- String lights such as Christmas lights unless battery operated
- Matches/Cigarettes
- Projectiles
- Pets
- Open coil heating or cooking devices (toaster ovens, space heaters, air fryers)
- Candles or incense
- Fireworks
- Weapons or anything that can be construed as a weapon
- Illegal drugs/paraphernalia
- Hoverboard
- Scooters are prohibited

WHAT'S THE WI-FI?

For information on connecting to FAMU Wireless, iRattler, FAMUmail, or connecting smart devices/gaming systems, please go to [IT Service Helpdesk \(famu.edu\)](#).

You may also seek help with connectivity issues by clicking on [Help Desk Request \(famu.edu\)](#), calling 850-412-HELP(4357), or emailing helpdesk@famu.edu.

Keep in mind, the Available wireless networks on campus are used for the following:

- FAMUSecure (students, staff, faculty) – connect your laptop, desktop, tablet, mobile phone
- FAMUGuest – (residents - must register device(s)) – connect your gaming systems, smartTVs, portable streaming devices, etc., (visit IT webpage – “connecting a gaming or smart device” for more information)

Please be advised that personal routers, switches, range extenders, hot spots, wireless cameras/doorbells, etc., are not allowed in University Housing facilities. Additionally, wireless printers cannot be registered as a wireless device on campus.

Finally, the wireless equipment is to be treated with great care. Any damage to the ethernet and cable ports may incur up to a \$500 fine.



FAMU Residence Hall Association partners with SWAK University Services (SWAKU) to offer FAMU Families everything they need to outfit the residence hall room.

FAMU has Twin XL mattresses. These mattresses are 80 – 84 inches, instead of 76 inches which is the size of a standard twin mattresses. SWAKU has a multitude of options for these Twin XL sheet sets, comforters, blankets, bed toppers and mattress protectors. They are all guaranteed to fit these specially sized beds. SWAKU also has hundreds of options to complete the outfitting of the residence hall room, including storage solutions, carpets, headboards, and room décor.

The bundles are the most popular solutions, and an easy way to make sure your Student has everything they need. SWAKU has coordinated with FAMU to ensure that these bundles are a turnkey solution for getting off to the right start in college life. Order deadline for Room Essentials is July 17th, but we highly recommend ordering early to ensure the best availability of product for your Student.

NOTE: Rattler Pointe utilizes double XL sheets.

WE ARE HOUSING



Room Essentials:



Room Essentials:



WE'VE PARTNERED TO EASE THE STRESS OF MOVE-IN DAY



**SAVING
TIME
WHEN
YOU
NEED IT
MOST**

STORAGE + SHIPPING
MADE EASY



We supply all
the essentials
to pack



Lock everything
in your room to
be picked up
after campus
closes



Everything will
be waiting in
your new room
when you return
to campus

- We Ship You Empty Boxes
 - We send a bundle of empty boxes along with tape and prepaid return shipping labels to your home.
- You Pack & Ship Back
 - You pack your items in the boxes, seal them up, and ship them back over to us over the summer months.
- We Receive & Deliver
 - Our team receives those packages, stores them, and delivers them ready and waiting in your room when you arrive on campus.

FOR MORE INFORMATION VISIT: WWW.STORAGESCHOLARS.COM

HOUSING STYLES

TRADITIONAL/SUITE-STYLE

- POLKINGHORNE VILLAGE
- SAMPSON HALL
- YOUNG HALL
- FAMU TOWERS
- VENOM LANDING

AMENITIES

- CLIMATE CONTROLLED HEAT & AIR
- EXTERIOR & INTERIOR SURVEILLANCE IN COMMON AREAS
- EXTERIOR ELECTRONIC CARD ACCESS

APARTMENT-STYLE

- PALMETTO SOUTH
- PALMETTO PHASE III
- RATTLER POINTE

AMENITIES

- CENTRAL AIR & HEAT
- FULL KITCHEN & DINING ROOM
- EXTERIOR SURVEILLANCE

ALL HALLS INCLUDE
WI-FI | COMPUTER LABS



LIVING LEARNING COMMUNITIES (LLC)

The communities located in Towers North:

- Allied Health Sciences
- Nursing
- Pharmacy and Pharmaceutical Sciences
- Social Sciences, Arts and Humanities

The communities located in Towers South:

- Journalism and Graphic Communication
- Education
- Environment
- Agriculture and Food Sciences
- Architecture and Engineering Technology

The communities located in Village West:

- Honors
- Business and Industry
- Science and Technology
- Engineering

The communities located in Village East:

- Honors RISE
- RATTLERS RISE (Second year experience)

The community located in Phase III:

- Transfer

The deadline to apply for the LLCs has closed.



RATTLER POINTE



SAMPSON & YOUNG HALL



PALMETTO SOUTH

ESSENTIAL RESOURCES

RENTAL INSURANCE RECOMMENDED

Renters insurance provides valuable protection if a student's personal belongings are stolen or damaged by a covered event, including laptop computers, smart phones, bicycles, game consoles, textbooks, clothing, and other items. In most instances, the university assumes no responsibility if your valuables are lost, stolen or damaged.

Renters insurance also protects students financially for unintentional damage to the student's residence, or bodily injury to others for which the student is legally liable within the residence premises.

ADDITIONAL RESOURCES

Living On Campus

[Connecting Your Smart Devices:](https://www.youtube.com/watch?v=iMsNhUxSuU8/)

<https://www.youtube.com/watch?v=iMsNhUxSuU8/>

[Mailing a Package:](https://www.youtube.com/watch?v=3pd8G9WL6Pw)

<https://www.youtube.com/watch?v=3pd8G9WL6Pw>

Moving & Storage

[Storage Scholars](http://www.storagescholars.com)

www.storagescholars.com

ESSENTIAL LINKS

- [Fall '25 Application Guide](#)
- [Official Move-In Website](#)
- [TV Channels & Tutorial](#)



PARENT PORTAL

Greetings Rattler Family, Congratulations on your student's acceptance into Florida Agricultural and Mechanical University, passionately known as FAMU!

The Office of University Housing has created a centralized online platform where parents of students can access information and resources related to University Housing. The information contained here will be updated on an ongoing basis as we strive to keep you abreast of the happenings in University Housing. The parent portal serves to provide access to important documents and forms, such as the student housing agreement, move-in instructions, and housing policies, in a digital format for easy reference.

It is imperative that your student stay up to date by following our Social Media pages at famuhousing1887 and paying attention to any announcements delivered through FAMUINFO. The same information they receive there will also be uploaded here. We do ask that you allow your scholar to become the responsible young adult you have raised them to be and take care of their own affairs. However, we understand that some information may slip by as they work towards GRADUATION and would like to make you aware.

First, if your student is Newly Admitted, please sit down and review their Admissions Packet in full to avoid any obstacles when it is time to apply for Housing.

If you have a Returning Student, please advise them to pay attention to FAMUINFO as this is often the method of first release for new information.

Lastly, feel free to explore the entire University Housing webpage at your convenience and contact us with any questions or concerns at (850) 599-3651 or famuhousing@famu.edu.

SCAN HERE



DIRECTIONS

THE PRIMARY VEHICLE ROUTE SHALL BE WAHNSH WAY, GAINES STREET, OSCEOLA STREET, EUGENIA STREET AND PERRY STREET (BOTH DIRECTIONS). EMERGENCY VEHICLES SHALL BE GIVEN PRIORITY FOR TRAVEL IF AN EMERGENCY INCIDENT OCCURRED.

FAMU TOWERS

451 Rudy Hubbard Way, Tallahassee, FL 32301

YOUNG/SAMPSON HALL

1591 Gibbs Hall Trail, Tallahassee, FL 32310

POLKINGHORNE VILLAGE

667 Robert & Trudy Perkins Way , Tallahassee, FL 32310

PALMETTO SOUTH APARTMENTS

255 Palmetto Street, Tallahassee, FL 32301

PALMETTO PHASE III APARTMENTS

277 Palmetto Street, Tallahassee, FL 32301

RATTLER POINTE BUILDING A

1220/1230 Conklin St Tallahassee, FL 32310

RATTLER POINTE BUILDING B

1119, 1123, 1130, 1135 Conklin St Tallahassee, FL 32310

RATTLER POINTE BUILDING C

636 Eugenia St Tallahassee, FL 32310

RATTLER POINTE BUILDING D

600 Eugenia St Tallahassee, FL 32310

VENOM LANDING

475 & 479 Rudy Hubbard Way, Tallahassee, FL 32301

PARKING & LOADING

THE PRIMARY VEHICLE ROUTE SHALL BE ALTHEA GIBSON WAY, GAINES STREET, OSCEOLA STREET, EUGENIA STREET AND PERRY STREET (BOTH DIRECTIONS). EMERGENCY VEHICLES SHALL BE GIVEN PRIORITY FOR TRAVEL IF AN EMERGENCY INCIDENT

POLKINGHORNE VILLAGE

667 Robert & Trudy Perkins Way , Tallahassee, FL 32310

Students/Parents can enter from Perry Street for staging. An attendant/Officer will direct you to the unloading zone (Polkinghorne Village rear parking lot). Please note that this area is for unloading only. Items should be unloaded, and then the vehicle should be moved to Ardelia Court or Parking Garage for parking. Someone must always stay with the vehicle during the unloading process. The parking spaces in front of Polkinghorne Village are for ADA unloading only. There is no parking in front of Polkinghorne Village on Robert and Trudie Perkins Way.



FAMU TOWERS

451 Rudy Hubbard Way, Tallahassee, FL 32301

The staging area will be the MLK Blvd Parking Lot (located at the intersection of MLK and Lincoln Street). Students/Parents can enter the Parking Lot from MLK Blvd for staging. An attendant/Officer will direct you to the unloading zone (Towers westside parking lot). Please note that this area is for unloading only. Someone must always stay with the vehicle during the unloading process. Items should be unloaded, and then the vehicle should be moved to the Gravel lot, located at the intersection of MLK Blvd and Osceola Street for parking.



YOUNG/SAMPSON HALL

1591 ALTHEA GIBSON Way, Tallahassee, FL 32310

Students/Parents can enter the Bragg Memorial Stadium parking lot from Perry St for staging. All staging will travel North on Wahnish Way. An attendant/Officer will direct you to the unloading zone. Please note that this area is for unloading only. Items should be unloaded, and then the vehicle should be moved to the Parking Garage for parking. Someone must always stay with the vehicle during the unloading process.



PARKING & LOADING

THE PRIMARY VEHICLE ROUTE SHALL BE WAHNISH WAY, GAINES STREET, OSCEOLA STREET, EUGENIA STREET AND PERRY STREET (BOTH DIRECTIONS). EMERGENCY VEHICLES SHALL BE GIVEN PRIORITY FOR TRAVEL IF AN EMERGENCY INCIDENT OCCURRED.

RATTLER POINTE

1220/1230 Conklin St Tallahassee, FL 32310

Students/Parents can enter the Rattler Pointe Complex off of Eugenia Street from either Perry Street or Wahnish Way for staging. An attendant/Officer will direct you to the unloading zone (designated building). Please note that this area is for unloading only. Items should be unloaded, and then the vehicle should be moved to Ardelia Court for parking. Someone must always stay with the vehicle during the unloading process. After unloading, the vehicle must exit from the complex north on Conklin Street to FAMU Way, then right (east) on FAMU Way to Wahnish Way, then right (south) on Wahnish Way to the traffic lights. Make right (west) onto Robert and Trudie Perkins Way to Ardelia Court (which will be to your right). There is no parking in front of the apartment overnight during the move in timeframe. All vehicles must park on Ardelia Court in the grassy area.

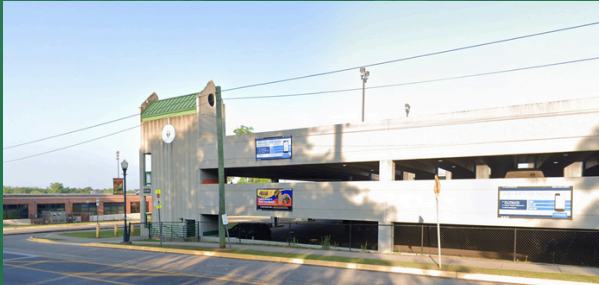


PARKING & LOADING

THE PRIMARY VEHICLE ROUTE SHALL BE WAHNISH WAY, GAINES STREET, OSCEOLA STREET, EUGENIA STREET AND PERRY STREET (BOTH DIRECTIONS).
EMERGENCY VEHICLES SHALL BE GIVEN PRIORITY FOR TRAVEL IF AN EMERGENCY INCIDENT OCCURRED.

SHUTTLE SERVICE

*Two shuttles will be circling around the campus
with designated bus stops from 9:00am-5:00pm.*



PARKING GARAGE

PREFERRED TRAVEL ROUTE

- Traveling South to Parking Garage
 - Go South on Wahnish Way
 - Turn right into Parking Garage
- Traveling North to Parking Garage
 - Go North on Wahnish Way
 - Turn left onto Okaloosa Street
 - Turn right onto Perry Street
 - Turn right onto Robert and Trudie Perkins Way
 - Turn right onto Wahnish Way
 - Turn right into Parking Garage

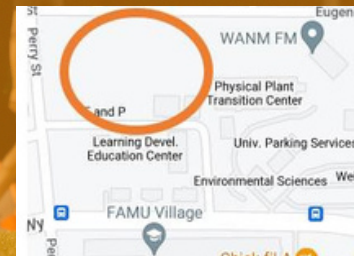


GAME DAY PARKING

Please be advised that, "All parking lots on campus are reserved for Athletics for Game Day parking at 5:30PM each Friday of a game week"
-FAMU Athletics

1. All vehicles must be moved from the Welcome Center Parking Lot and the Wahnish Parking Garage by 5:30 p.m., the Friday before each home game.
2. Starting at noon on Thursday's before homes games, vehicles in the Polkinghorne Village lot, must be relocated. Please see image below for clarity.
3. Parking is available on the grass lot of Ardelia Court at the corner of Perry Street and Eugenia Street. This is directly across from Polkinghorne Village, behind the brick buildings at 667 Ardelia Court, Tallahassee, FL 32310, and the RV Parking.

update site



SCAN TO KNOW MORE ABOUT GAME DAY PARKING

PREARRIVAL HALL MEETINGS

**AUGUST,
2026**

7PM | ZOOM

VILLAGE EAST

<https://famu.zoom.us/j/98762148874>

VILLAGE WEST

https://famu.zoom.us/webinar/register/WN_FN2rs_yDTTyWv-gHulEHig

SAMPSON/ YOUNG

<https://famu.zoom.us/j/94890694769>

TOWERS NORTH

<https://famu.zoom.us/j/99827158508>

VENOM LANDING SOUTH

<https://famu.zoom.us/j/99827158508https://us04web.zoom.us/j/73604680077?pwd=YWGTeERbSkCUkkJgkKCceN19HGLZd.1>

TOWERS SOUTH

<https://famu.zoom.us/j/93018740896>

PALMETTO SOUTH

<https://famu.zoom.us/j/97452375668>

PALMETTO PHASE III

<https://famu.zoom.us/j/94754712949>

RATTLE POINTE (TO HAPPEN AT 8 PM)

<https://famu.zoom.us/j/94276630635>

VENOM LANDING NORTH

<https://famu.zoom.us/j/94049480068>



MEET YOUR AREA COORDINATOR/RESIDENT DIRECTOR

MS. NIGERIA GWINN

Venom Landing North
Front Desk: 850-599-8105
Email: Nigeria.gwinn@famu.edu

MS. MAYA LEWIS

Polkinghorne Village East
Front Desk: 850-412-5349
Email: maya.lewis@famu.edu

MS. SARAH DOMINGUEZ

Towers South
Front Desk: 850-412-7666
Email: Justen1.smith@famu.edu

MS. NATALIE ALEXIS

Sampson/Young
Front Desk: 850-412-6561
Email: tia1.burgess@famu.edu

MR. RAYJAE GRANT

Phase III
Front Desk: 850-599-8802
Email: Rayjae.grant@famu.edu

MR. DARIUS JONES

Venom Landing South
Front Desk: 850-599-8112
Email: Rayjae.grant@famu.edu

MR. JUSTEN SMITH

Polkinghorne Village West
Front Desk: 850-412-5370
Email: darius6.jones@famu.edu

MS. JORDAN WHITE

Tower North
Front Desk: 850-412-5079
Email: Justen1.smith@famu.edu

MS. TIA BURGESS

Rattlers Pointe
Front Desk: 850.412.0000
Email: info@ochllc.com

MR. TYLER KELLY

Palmetto South (Assistant Resident Director)
Front Desk: 850-561-2900
Email: tyler.kelly@famu.edu

STUDIES SHOW THAT STUDENTS WHO LIVE ON CAMPUS TEND TO: **COMPLETE** MORE CREDIT HOURS & HAVE **HIGHER GPA**

- THE RESIDENCE HALL ASSOCIATION IS A STUDENT-LED CAMPUS ORGANIZATION WITHIN THE OFFICE OF UNIVERSITY HOUSING. RHA AIMS TO BETTER THE RESIDENTIAL EXPERIENCE FOR THE ON-CAMPUS LIVING STUDENTS THROUGH ADVOCACY AND STUDENT LEADERSHIP.
- RHA HOSTS LARGE CAMPUS-WIDE EVENTS AND PLANNED TRIPS FOR ALL STUDENTS WHO LIVE ON-CAMPUS
- RHA OFFERS LEADERSHIP OPPORTUNITIES. OUR EXECUTIVE BOARD RUNS THE ORGANIZATION.

RHA



**WE ARE
HOUSING**
FAMU | FLORIDA A&M UNIVERSITY
UNIVERSITY HOUSING

RESIDENT HALL ASSOCIATION
FOLLOW @FAMUHOUSING1887



RHA HOSTS LARGE CAMPUS-WIDE EVENTS FOR ALL STUDENTS WHO LIVE ON-CAMPUS

WE ARE HOUSING

1735 ALTHEA GIBSON WAY, SUITE 305
FAMUHOUSING@FAMU.EDU
PHONE: 850-599-3651 | FAX: 850-561-2620
FAMU.EDU/HOUSING

SCAN TO CONNECT ON SOCIAL @FAMUHOUSING1887

