



Coleman Library

Florida A & M University 2012-2013 Fact Book

Student Enrollment



Tuition and Fees 2012-2013

Fees Per Credit Hour	Undergraduate		Graduate		Law	
	Resident	Non-Resident	Resident	Non-Resident	Resident	Non-Resident
Tuition	\$103.32	\$103.32	\$334.13	\$334.13	\$379.76	\$379.76
Student Financial Aid Fee	\$5.16	\$5.16	\$16.70	\$16.70	\$18.98	\$18.98
Cap Improvement Fee	\$6.76	\$6.76	\$6.76	\$6.76	\$6.76	\$6.76
Activity and Service Fee	\$10.50	\$10.50	\$10.50	\$10.50	\$10.50	\$10.50
Athletic Fee	\$13.97	\$13.97	\$13.97	\$13.97	\$13.97	\$13.97
Technology Fee	\$5.16	\$5.16	\$16.70	\$16.70	\$18.98	\$18.98
Health Fee	\$6.91	\$6.91	\$6.91	\$6.91	\$6.91	\$6.91
Non-Residents shall be assessed the following two additional fees:						
Non-Resident Fee		\$379.07		\$587.02		\$611.46
Non-Resident Financial Aid Fee		\$18.95		\$29.35		\$30.57
Total Fees Per Credit Hour	\$151.78	\$549.80	\$405.67	\$1022.04	\$455.86	\$1,097.89

Other Required Fees

Orientation Fee

\$35.00 Students who are enrolled for the first time

Transportation and Access Fee

\$65.00 for Fall Semester and \$65.00 for Spring Semester
\$33.00 for Summer Semester

ID Card

\$5.00 per semester (Not charged in Summer)

Materials and Supply Fees

\$15.00 – \$300.00 (per applicable course)

Late Payment Fee

\$100.00

Late Registration Fee

\$100.00

Repeat Course Surcharge

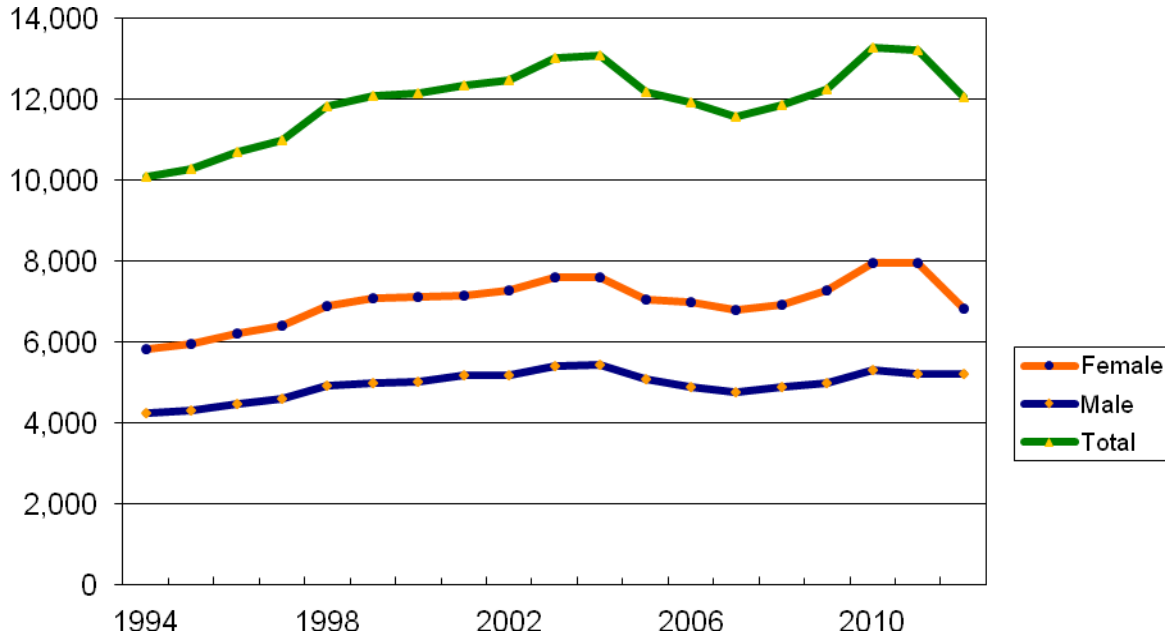
\$120.24 per credit hour for regular courses taken at least the third time
\$109.03 for College Preparatory (C-Prep) courses taken at least the third time

Differential Fee

Undergraduate students whose date of enrollment was on or after July 1, 2007 will be assessed an additional tuition differential of \$36.38 per credit hour



Historical Enrollment by Gender Fall Semesters 1994 - 2012



	Female		Male		Total		Female		Male		Total
	#	%	#	%			#	%	#	%	
1994	5,828	57.8%	4,256	42.2%	10,084						
1995	5,967	58.1%	4,310	41.9%	10,277						
1996	6,228	58.2%	4,472	41.8%	10,700						
1997	6,408	58.3%	4,592	41.7%	11,000						
1998	6,895	58.3%	4,942	41.7%	11,837						
1999	7,097	58.7%	5,003	41.3%	12,100						
2000	7,135	58.7%	5,026	41.3%	12,161						
2001	7,166	58.0%	5,183	42.0%	12,349						
2002	7,273	58.3%	5,195	41.7%	12,468						
2003	7,620	58.5%	5,403	41.5%	13,023						
2004	7,618	58.3%	5,449	41.7%	13,070						
2005	7,070	58.1%	5,104	41.9%	12,177						
2006	7,001	58.8%	4,909	41.2%	11,913						
2007	6,783	58.6%	4,784	41.4%	11,567						
2008	6,940	58.6%	4,908	41.4%	11,848						
2009	7,279	59.4%	4,982	40.6%	12,261						
2010	7,964	60.0%	5,313	40.0%	13,277						
2011	7,973	60.4%	5,234	39.6%	13,207						
2012	6,843	56.8%	5,208	43.2%	12,051						



Student Enrollment by School/College/Major/Gender Fall 2012

Program	Female	Percent	Male	Percent	Total
College of Agriculture and Food Sciences					
31101 Agri-Business	20	44.4%	25	55.6%	45
31201 Agricultural Science	5	50.0%	5	50.0%	10
31202 Animal Science	62	74.7%	21	25.3%	83
31204 Agronomy	6	46.2%	7	53.8%	13
31205 Ent & Strctl Pest Control	4	57.1%	3	42.9%	7
31206 Ornamental Horticulture	1	50.0%	1	50.0%	2
31207 Food Science	40	80.0%	10	20.0%	50
31208 Veterinary Technology	7	87.5%	1	12.5%	8
31282 Agricultural Science Grad	9	75.0%	3	25.0%	12
31284 Agribusiness	1	100.0%	0	0.0%	1
31285 Animal Science Grad	1	100.0%	0	0.0%	1
31286 Entomology	4	80.0%	1	20.0%	5
31287 Plant Sciences	2	66.7%	1	33.3%	3
31288 MS in Agr Science	2	100.0%	0	0.0%	2
31291 Entomology Doctoral	0	0.0%	1	100.0%	1
31501 Landscape Design & Management	2	28.6%	5	71.4%	7
31601 Bio & Agric Sys Engineering	10	40.0%	15	60.0%	25
31701 International Agriculture	1	50.0%	1	50.0%	2
Total	177	63.9%	100	36.1%	277

College of Science and Technology

A4101 Biology	276	67.2%	135	32.8%	411
A4102 Biology Pre-Professional	54	77.1%	16	22.9%	70
A4103 Pre-Medicine	241	78.5%	66	21.5%	307
A4105 Molecular Biology	40	80.0%	10	20.0%	50
A4181 Molecular Cellular Biology	6	60.0%	4	40.0%	10
A4183 Physiology	2	66.7%	1	33.3%	3
A4185 Biological Sciences	3	60.0%	2	40.0%	5
A4201 Chemistry	44	67.7%	21	32.3%	65
A4203 Chem Pre-med/Dent	15	75.0%	5	25.0%	20
A4204 Biochemistry	8	50.0%	8	50.0%	16
A4281 Chemistry - Grad	7	77.8%	2	22.2%	9
A4301 Mathematical Sciences	5	83.3%	1	16.7%	6
A4303 Mathematics	10	50.0%	10	50.0%	20
A4304 Actuarial Science	4	33.3%	8	66.7%	12
A4401 Applied Physics	6	33.3%	12	66.7%	18
A4481 Physics Grad	0	0.0%	1	100.0%	1
A4491 Physics-Doctoral	2	22.2%	7	77.8%	9
A8100 Pre-Computer Info Systems	12	36.4%	21	63.6%	33



Student Enrollment by School/College/Major/Gender Fall 2012

Program	Female	Percent	Male	Percent	Total
College of Science and Technology (cont)					
A8102 Comp Info Systems	26	26.3%	73	73.7%	99
A8103 Computer Information Science	16	30.8%	36	69.2%	52
A8104 Information Technology	20	30.8%	45	69.2%	65
A8181 Software Engineering Science	6	33.3%	12	66.7%	18
A8182 Computer Science	3	42.9%	4	57.1%	7
Total	806	61.7%	500	38.3%	1,306

College of Education					
10181 Education-Qualifying Graduate	2	100.0%	0	0.0%	2
11100 Pre-Music Teacher Education	8	22.2%	28	77.8%	36
11103 MusicTchr Ed:Instr-Wind,Piano	2	22.2%	7	77.8%	9
11104 MusicTchr Ed:Choral Music-Voice	3	60.0%	2	40.0%	5
11181 Educ Leadership Certification	18	72.0%	7	28.0%	25
11182 Counselor Education	28	93.3%	2	6.7%	30
11191 Educational Leadership-Doctoral	27	64.3%	15	35.7%	42
12000 Pre-Elementary Edu	115	85.8%	19	14.2%	134
12100 Pre-Early Childhood Edu	25	96.2%	1	3.8%	26
12101 Elementary Education	61	93.8%	4	6.2%	65
12102 Pre-Kind/Primary Edu	13	100.0%	0	0.0%	13
12202 Drama Education	1	100.0%	0	0.0%	1
13102 English Education	20	80.0%	5	20.0%	25
13183 Math Education Grad	1	100.0%	0	0.0%	1
14100 Pre-Physical Education	12	30.8%	27	69.2%	39
14101 Physical Education	4	28.6%	10	71.4%	14
14104 Biology Education	1	100.0%	0	0.0%	1
14281 Sport Management Grad	3	30.0%	7	70.0%	10
14300	1	20.0%	4	80.0%	5
14302 Mathematics Education	9	64.3%	5	35.7%	14
14402 Physics Education	0	0.0%	1	100.0%	1
15100 Pre-Technology Education	0	0.0%	1	100.0%	1
15101 Business Education	0	0.0%	1	100.0%	1
15102 Admin Information Mgmt	11	73.3%	4	26.7%	15
15104 Technology Education	1	100.0%	0	0.0%	1
15200 Pre-History Education	11	61.1%	7	38.9%	18
15202 History Education	8	50.0%	8	50.0%	16
15304 Political Science Education	2	22.2%	7	77.8%	9
16161 School Psychology-Specl	1	100.0%	0	0.0%	1
Total	388	69.3%	172	30.7%	560

College of Engineering					
40100 Pre-Engineering	3	20.0%	12	80.0%	15
41100 Pre-Engr Civil/Env	12	19.4%	50	80.6%	62
41101 Civil Engineering	4	18.2%	18	81.8%	22



Student Enrollment by School/College/Major/Gender Fall 2012

Program	Female	Percent	Male	Percent	Total
College of Engineering (cont)					
41181 Civil Engineering Grad	3	100.0%	0	0.0%	3
41191 Civil Engineering - Doctoral	4	57.1%	3	42.9%	7
42100 Pre-Engr Electrical	5	14.3%	30	85.7%	35
42101 Electrical Engineering	9	28.1%	23	71.9%	32
42102 Computer Engineering	3	25.0%	9	75.0%	12
42181 Electrical Engineering Grad	1	25.0%	3	75.0%	4
42191 Electrical Engineering Doctor	1	33.3%	2	66.7%	3
42200 Pre-Engr Computer Eng	9	17.3%	43	82.7%	52
44100 Pre-Engr Chem/BioMed	14	42.4%	19	57.6%	33
44101 Chemical Engineering	6	66.7%	3	33.3%	9
44104 Chem Engr-Engineering Material	0	0.0%	2	100.0%	2
44105 Chem Engr -Biomedical Engineer	2	66.7%	1	33.3%	3
44191 Chemical Engineering-Doctoral	2	100.0%	0	0.0%	2
45100 Pre-Engr Mechanical Engr	11	19.6%	45	80.4%	56
45101 Mechanical Engineering	5	21.7%	18	78.3%	23
45181 Mechanical Engineering Grad	1	33.3%	2	66.7%	3
45191 Mechanical Engineering-Doctora	2	100.0%	0	0.0%	2
46100 Pre-Engr Industrial Engr	4	33.3%	8	66.7%	12
46101 Industrial Engineering	6	54.5%	5	45.5%	11
46181 Industrial Engineering Grad	1	100.0%	0	0.0%	1
46191 Industrial Engineering-Doctora	0	0.0%	1	100.0%	1
Total	108	26.7%	297	73.3%	405

College of Law					
E1171 JURIS DOCTOR	260	54.2%	220	45.8%	480
E1172 Law Professional 2	97	53.3%	85	46.7%	182
Total	357	53.9%	305	46.1%	662

College of Pharmacy and Pharmaceutical Sciences					
B0100 Pre-Pharmacy	1	100.0%	0	0.0%	1
B1171 Pharmacy Professional	648	70.1%	276	29.9%	924
B1181 Pharmaceutical Science	6	75.0%	2	25.0%	8
B1182 Graduate Public Health Online	46	76.7%	14	23.3%	60
B1191 Hlth Outcome Res & Pharmacoeco	23	60.5%	15	39.5%	38
B1192 Public Health Doctoral	17	77.3%	5	22.7%	22
Total	741	70.4%	312	29.6%	1,053

College of Social Sciences, Arts and Humanities					
21101 Music	16	40.0%	24	60.0%	40
21102 Music Education	0	0.0%	1	100.0%	1
21105 Jazz Studies	1	33.3%	2	66.7%	3
21106 Music Industry	10	18.2%	45	81.8%	55
22101 Philosophy & Religion	3	30.0%	7	70.0%	10



Student Enrollment by School/College/Major/Gender Fall 2012

Program	Female	Percent	Male	Percent	Total
College of Social Sciences, Arts and Humanities (cont)					
22102 Philosophy	2	50.0%	2	50.0%	4
22103 Religious Studies	2	40.0%	3	60.0%	5
22200 Pre-Drama Education	0	0.0%	1	100.0%	1
22201 Theater	45	65.2%	24	34.8%	69
22301 Fine Arts	15	71.4%	6	28.6%	21
23100 English	12	80.0%	3	20.0%	15
23101 English	59	67.0%	29	33.0%	88
23202 Spanish	3	75.0%	1	25.0%	4
25101 HISTORY	12	33.3%	24	66.7%	36
25103 African-American Studies	15	60.0%	10	40.0%	25
25301 Political Science	146	56.4%	113	43.6%	259
25302 Public Management	1	50.0%	1	50.0%	2
25303 Pol Sci/Publ Admin Conc	13	43.3%	17	56.7%	30
26101 Psychology	358	76.2%	112	23.8%	470
26161 School Psychology-Spec	1	50.0%	1	50.0%	2
26181 Community Psychology	20	71.4%	8	28.6%	28
27100 Pre-Social Work	105	79.5%	27	20.5%	132
27101 Criminal Justice	443	53.1%	391	46.9%	834
27102 Social Work	144	86.7%	22	13.3%	166
27103 Sociology	80	66.1%	41	33.9%	121
27183 Political Science - Grad	8	72.7%	3	27.3%	11
27186 Social Work Grad	48	82.8%	10	17.2%	58
27187 Public Administration Grad	32	80.0%	8	20.0%	40
27188 History - Grad	4	28.6%	10	71.4%	14
27189 Criminal Justice - Grad	18	69.2%	8	30.8%	26
Total	1,616	62.9%	954	37.1%	2,570
Other					
81101 General Studies - TRIO	44	62.9%	26	37.1%	70
81201 CeDAR	9	31.0%	20	69.0%	29
81301 Undecided	47	47.5%	52	52.5%	99
81302 Freshman Studies	135	60.3%	89	39.7%	224
91101 Unclassified Undergrad	11	73.3%	4	26.7%	15
91181 Unclassified Graduate	24	61.5%	15	38.5%	39
911E2 NON-DEGREE TRANSIENT LAW PT	0	0.0%	2	100.0%	2
92281 Grad Special Stud -Off Campus	1	100.0%	0	0.0%	1
93381 Teacher Certification Graduate	0	0.0%	1	100.0%	1
94401 High School Dual Enrolled	13	86.7%	2	13.3%	15
95501 Community College Dual Enroll	3	33.3%	6	66.7%	9
97701 FAMU-FSU Cooperative Program	30	48.4%	32	51.6%	62
99901 Int'l Exchange Program-UG	3	60.0%	2	40.0%	5
Total	320	56.0%	251	44.0%	571



Student Enrollment by School/College/Major/Gender Fall 2012

Program	Female	Percent	Male	Percent	Total
School of Allied Health Sciences					
C0100 Pre-Health Care	117	73.1%	43	26.9%	160
C0200 Pre-Health Information Mgmt	18	81.8%	4	18.2%	22
C0400 Pre-Cardiopumony Science	55	73.3%	20	26.7%	75
C1101 Health Care Management	136	77.3%	40	22.7%	176
C1181 Health Care Administration	19	67.9%	9	32.1%	28
C2101 Hlth Informatics & Info Mgmt	74	80.4%	18	19.6%	92
C3181 Physical Therapy Graduate	3	42.9%	4	57.1%	7
C3191 Doctor of Physical Therapy	73	71.6%	29	28.4%	102
C4101 Cardiopulmonary Science	19	67.9%	9	32.1%	28
C5181 Occupational Therapy Grad	56	86.2%	9	13.8%	65
C6101 Health Sci - Pre-Physical Ther	286	62.9%	169	37.1%	455
C6102 Health Science-Occ/Well	216	78.5%	59	21.5%	275
Total	1,072	72.2%	413	27.8%	1,485

School of Architecture					
70100 Pre-Architecture	36	32.7%	74	67.3%	110
71101 Architectural Studies	28	40.0%	42	60.0%	70
71171 Architecture: 1st P	4	36.4%	7	63.6%	11
71181 Architecture - Grad	13	37.1%	22	62.9%	35
73102 Construction Engineering Tech	9	12.5%	63	87.5%	72
73201 Civil Engineering Technology	0	0.0%	5	100.0%	5
73401 Electronic Engineering Tech	6	12.0%	44	88.0%	50
All	96	27.2%	257	72.8%	353

School of Business and Industry					
50181 Business Admin-qualifying Grad	1	50.0%	1	50.0%	2
51100 Pre-Accounting	18	52.9%	16	47.1%	34
51101 Accounting	73	54.9%	60	45.1%	133
52101 Business Administration	134	45.0%	164	55.0%	298
52102 Management	11	44.0%	14	56.0%	25
52106 Facilities Management	4	33.3%	8	66.7%	12
52181 Business Administrn-1 Year MBA	78	60.0%	52	40.0%	130
52182 Business Admin Five-Year MBA	8	47.1%	9	52.9%	17
53101 Pre-Business	317	47.8%	346	52.2%	663
55201 Economics	17	25.0%	51	75.0%	68
Total	661	47.8%	721	52.2%	1,382



Student Enrollment by School/College/Major/Gender Fall 2012

Program	Female	Percent	Male	Percent	Total
School of Journalism and Graphic Communication					
60100 Pre-Journalism	152	68.2%	71	31.8%	223
61101 Newspaper Journalism	5	71.4%	2	28.6%	7
61102 Magazine Production	11	78.6%	3	21.4%	14
61103 Broadcast Journalism	121	66.9%	60	33.1%	181
61104 Public Relations	106	70.2%	45	29.8%	151
61181 Journalism Grad	3	75.0%	1	25.0%	4
62101 Graphics Production	1	50.0%	1	50.0%	2
62102 Photography	7	77.8%	2	22.2%	9
62104 Graphic Design	64	44.1%	81	55.9%	145
Total	470	63.9%	266	36.1%	736
School of Nursing					
D0100 Pre-Nursing	485	89.8%	55	10.2%	540
D1101 Nursing	62	91.2%	6	8.8%	68
D1181 Graduate Nursing Online	28	96.6%	1	3.4%	29
Total	575	90.3%	62	9.7%	637
School of the Environment					
01101 Environ Sciences	11	47.8%	12	52.2%	23
01181 Environmental Science	6	54.5%	5	45.5%	11
01191 Environmental Science Doctoral	15	75.0%	5	25.0%	20
Total	32	59.3%	22	40.7%	54
Grand Total	7,419	61.6%	4,632	38.4%	12,051



Student Enrollment by Ethnic Origin Fall 2008 through Fall 2012

	Non-Resi. Alien	Hispanic	Amer-Indian	Asian	Black	White	Multiple Races	Unkown	All
Fall 2008	131	268	27	141	10,631	596	0	54	11,848
Fall 2009	113	261	23	155	11,123	586	0	0	12,261
Fall 2010	97	207	34	158	12,161	601	19	0	13,277
Fall 2011	118	233	30	140	12,080	593	13	0	13,207
Fall 2012	130	228	25	119	10,935	603	11	0	12,051

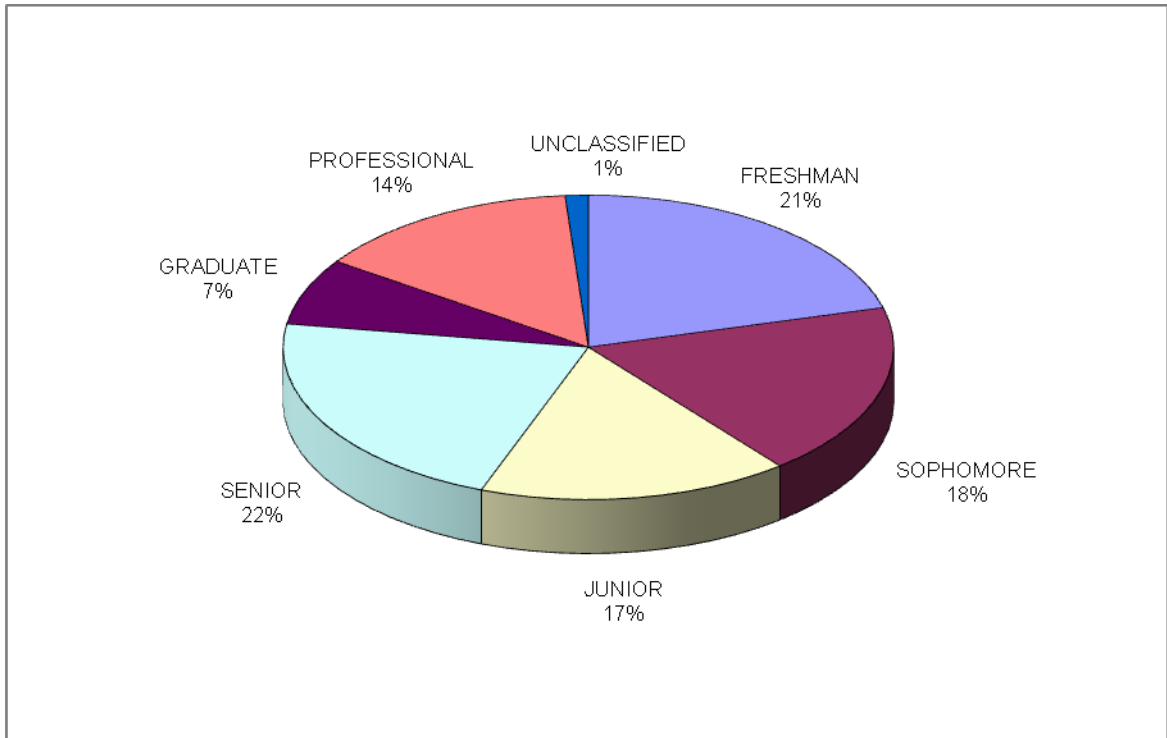
Student Enrollment by Residency Fall 2008 through Fall 2012

	In-State				Out-of-State				All
	Under-graduate	Graduate	Unclassified	Total	Under-graduate	Graduate	Unclassified	Total	
Fall 2008	8,186	1,706	177	10,069	1,524	243	12	1,779	11,848
Fall 2009	8,587	1,712	169	10,468	1,496	281	16	1,793	12,261
Fall 2010	9,522	1,646	148	11,316	1,625	313	23	1,961	13,277
Fall 2011	9,448	1,673	158	11,279	1,574	336	18	1,928	13,207
Fall 2012	8,542	1,685	135	10,362	1,386	291	12	1,689	12,051



Student Enrollment by Institutional Classification

Fall 2012

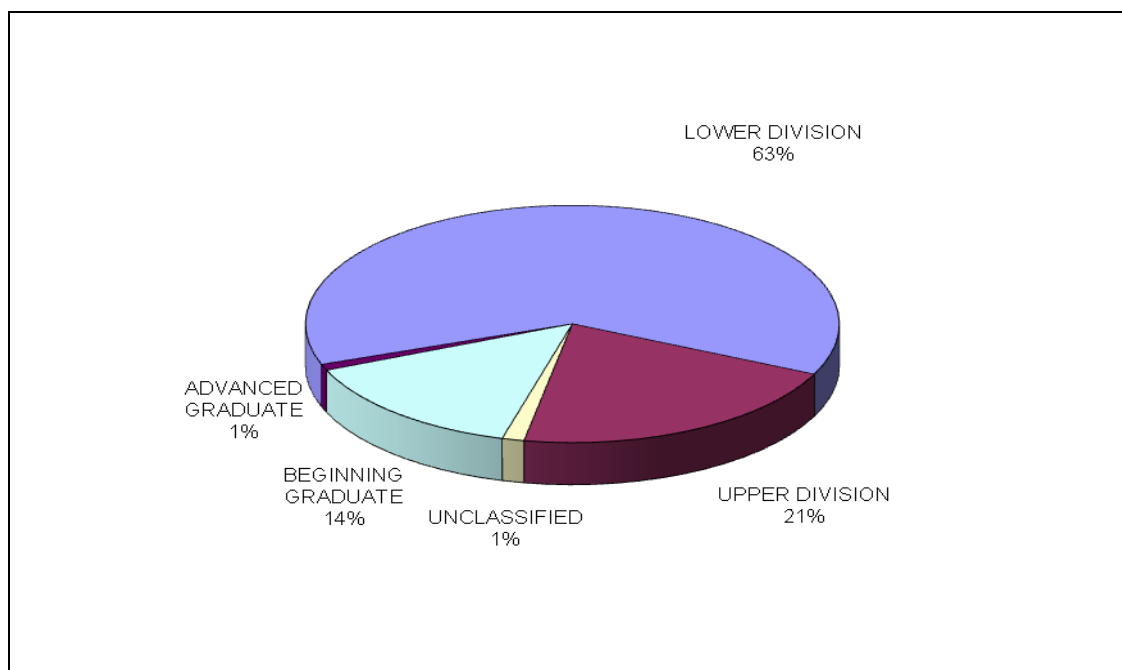


Institutional Classification Level	Fall 2008	Fall 2009	Fall 2010	Fall 2011	Fall 2012
FRESHMAN	3,493	3,914	4,385	3,778	2,508
SOPHOMORE	1,808	1,892	2,108	2,047	2,219
JUNIOR	1,640	1,742	1,981	1,963	1,985
SENIOR	2,510	2,289	2,440	2,614	2,621
GRADUATE	1,042	1,045	1,156	981	855
PROFESSIONAL	1,166	1,194	1,036	1,648	1,716
UNCLASSIFIED	189	185	171	176	147
TOTAL	11,848	12,261	13,277	13,207	12,051

Note: Institutional Classification Level is the categorization of the student's progress, as defined by the institution, at the beginning of the term toward a specific degree program, as anticipated after all transcript evaluation and transfer hours are posted.



Student Enrollment by Student Classification Fall 2012



Classification Level	Fall 2008	Fall 2009	Fall 2010	Fall 2011	Fall 2012
LOWER DIVISION	6,379	6,978	7,919	8,258	5,840
UPPER DIVISION	3,331	3,105	3,228	2,764	4,088
BEGINNING GRADUATE	1,850	1,891	1,854	1,897	1,851
ADVANCED GRADUATE	99	102	105	112	125
UNCLASSIFIED	189	185	171	176	147
TOTAL	11,848	12,261	13,277	13,207	12,051

Note: Student Classification Level is the categorization of the student's progress at the beginning of the term toward a specific degree or certificate as it applies to allocation of resources within the State University System.



Student Enrollment by County

	Fall 2008	Fall 2009	Fall 2010	Fall 2011	Fall 2012		Fall 2008	Fall 2009	Fall 2010	Fall 2011	Fall 2012
Alachua	111	117	127	139	137	Leon	1,521	1,672	1,763	1,737	1,592
Baker	15	4	5	9	9	Levy	3	5	4	4	7
Bay	57	61	75	70	58	Liberty	6	6	8	13	12
Bradford	10	6	7	5	9	Madison	44	38	37	44	39
Brevard	182	176	167	190	165	Manatee	58	58	66	55	48
Broward	1,276	1,406	1,569	1,575	1,429	Marion	59	68	71	90	81
Calhoun	7	9	9	9	9	Martin	13	17	21	19	19
Charlotte	8	8	13	9	8	Monroe	15	13	9	10	7
Citrus	8	7	8	4	4	Nassau	25	22	27	23	17
Clay	57	65	69	75	76	Non-Florida	2,435	2,208	2,337	2,242	2,009
Collier	34	36	37	31	32	Non-USA	194	178	148	152	149
Columbia	26	26	34	30	27	Okaloosa	41	41	41	46	44
Dade	1,249	1,214	1,361	1,341	1,194	Okeechobee	5	6	7	8	6
Desoto	4	3	4	5	7	Orange	761	769	875	880	830
Dixie	0	1	2	2	3	Osceola	51	66	81	92	85
Duval	770	795	848	834	763	Palm Beach	534	619	682	705	642
Escambia	160	161	170	173	143	Pasco	44	42	57	61	66
Flagler	23	18	17	21	24	Pinellas	195	222	251	244	239
Franklin	7	10	9	8	5	Polk	214	245	278	288	272
Gadsden	232	230	246	248	211	Putnam	14	14	17	16	20
Gilchrist	0	0	1	0	0	Santa Rosa	26	27	26	27	19
Glades	6	6	7	9	8	Sarasota	39	46	47	46	38
Gulf	7	9	8	8	8	Seminole	129	164	161	166	137
Hamilton	7	10	10	6	11	St. Johns	29	24	29	30	29
Hardee	2	3	4	2	1	St. Lucie	55	80	104	112	110
Hendry	10	16	15	14	9	Sumter	14	18	22	21	17
Hernando	11	20	20	18	18	Suwannee	16	12	14	20	17
Highlands	24	25	27	27	24	Taylor	31	30	28	23	30
Hillsborough	513	633	684	675	604	Union	6	2	3	1	2
Holmes	6	6	5	4	3	Volusia	118	117	129	111	98
Indian River	29	37	36	28	34	Wakulla	25	24	31	40	34
Jackson	43	38	43	48	51	Walton	4	7	8	11	11
Jefferson	62	63	74	70	64	Washington	11	9	11	11	13
Lafayette	3	2	2	2	0	Unknown	16	13	0	0	0
Lake	70	78	91	95	91	Total	11,848	12,261	13,277	13,207	12,051
Lee	68	80	80	75	73						



Student Enrollment by State

	Fall 2008	Fall 2009	Fall 2010	Fall 2011	Fall 2012		Fall 2008	Fall 2009	Fall 2010	Fall 2011	Fall 2012
Alaska	1	1	1	1	0	Missouri	41	35	40	34	29
Alabama	104	108	117	110	95	Mississippi	29	25	30	31	31
Arkansas	8	7	5	6	7	N. Carolina	89	69	76	64	59
Arizona	6	6	12	12	7	Nebraska	3	2	2	4	2
California	109	83	96	89	81	New Jersey	65	55	50	42	32
Colorado	11	12	10	10	7	Nevada	2	5	9	6	5
Connecticut	3	6	3	3	6	New York	101	96	83	77	65
D.C.	74	70	74	64	63	Ohio	58	52	54	52	41
Delaware	11	10	11	8	7	Oklahoma	6	5	5	0	4
Florida	9,215	9,863	10,785	10,797	9,878	Oregon	1	2	2	1	1
Georgia	641	593	668	665	583	Pennsylvania	50	43	38	34	26
Hawaii	2	2	1	3	1	Rhode Island	2	2	1	1	1
Iowa	1	2	4	3	3	S. Carolina	70	69	65	69	66
Idaho	0	1	1	1	0	Tennessee	42	47	50	49	50
Illinois	228	201	192	163	149	Texas	135	114	108	116	105
Indiana	41	29	35	38	28	Utah	1	0	1	1	1
Kansas	13	7	6	8	6	Virginia	76	69	78	64	58
Kentucky	6	5	5	5	7	Washington	9	10	10	5	7
Louisiana	40	26	27	27	27	Wisconsin	31	25	27	27	32
Massachusetts	11	14	19	17	11	West Virginia	0	1	1	1	1
Maryland	139	127	131	120	95	None	149	245	218	277	275
Maine	1	0	0	0	0	Unknown	101	0	0	0	0
Michigan	105	100	115	92	91	All	11,848	12,261	13,277	13,207	12,051
Minnesota	17	17	11	10	8						



Student Enrollment by Age Ranges Fall 2008 - 2012

AGE RANGE	Fall 2008	Fall 2009	Fall 2010	Fall 2011	Fall 2012
18 and Under	1,485	1,708	1,891	1,372	1,039
19-21	4,719	5,136	5,814	5,983	5,274
22-24	3,361	2,995	3,144	3,306	3,241
25-30	1,409	1,511	1,543	1,597	1,554
31-40	534	560	557	602	619
41-64	339	347	322	340	319
65 and Over	1	4	6	7	5
Total	11,848	12,261	13,277	13,207	12,051
Average Age	22	22	22	22	22

Student Enrollment by Institution's Classification and by Age Ranges - Fall 2012

Institutional Classification	Freshman	Sophomore	Junior	Senior	Graduate	1st Prof	Unclass.	Total
18 and Under	872	32	5	1	0	103	26	1,039
19-21	1518	1902	1069	382	8	344	51	5,274
22-24	71	231	682	1532	219	481	25	3,241
25-30	21	42	146	490	374	465	16	1,554
31-40	17	4	52	141	153	234	18	619
41-64	8	8	31	75	101	86	10	319
65 and Over	1	0	0	0	0	3	1	5
Total	2,508	2,219	1,985	2,621	855	1,716	147	12,051



Student Enrollment by Program Category, by Level

1-Undergraduate 2-Graduate 3-Unclassified	Fall 2010				Fall 2011				Fall 2012			
	1	2	3	Total	1	2	3	Total	1	2	3	Total
000000-000000	1,284	12	171	1,467	448	8	176	632	408	6	147	561
010000- Agricultural Science	153	16	0	169	188	21	0	209	173	24	0	197
010102- Agribusiness	44	0	0	44	39	0	0	39	45	0	0	45
010605- Landscape Des. & Mgmt	20	0	0	20	14	0	0	14	7	0	0	7
010701- International Agri. and Bus.	12	0	0	12	8	0	0	8	2	0	0	2
030104-Environmental Science	24	29	0	53	22	32	0	54	23	31	0	54
040201-Architecture	224	41	0	265	199	49	0	248	191	35	0	226
040601- Landscape Architecture	0	13	0	13	0	10	0	10	0	0	0	0
050201-African-American Studies	19	0	0	19	24	0	0	24	25	0	0	25
090401-Journalism	391	13	0	404	493	8	0	501	426	4	0	430
090902- Public Relations	145	0	0	145	147	0	0	147	151	0	0	151
110101-Comp. and Information Sci.	208	23	0	231	217	25	0	242	186	25	0	211
110103-Information Technology	22	0	0	22	51	0	0	51	65	0	0	65
130401-Educational Leadership	0	79	0	79	0	77	0	77	0	67	0	67
131199-Counselor Education	0	42	0	42	0	35	0	35	0	30	0	30
131201-Adult Education	0	4	0	4	0	0	0	0	0	0	0	0



Student Enrollment by Program Category, by Level

1-Undergraduate 2-Graduate 3-Unclassified	Fall 2010				Fall 2011				Fall 2012			
	1	2	3	Total	1	2	3	Total	1	2	3	Total
131202-Elementary Education	278	4	0	282	255	0	0	255	199	0	0	199
131205-Secondary Education	0	1	0	1	0	0	0	0	0	0	0	0
131210-Pre-Kinder./ Primary Edu.	48	0	0	48	55	0	0	55	39	0	0	39
131302- Art Education	3	0	0	3	0	0	0	0	0	0	0	0
131303-Business Education	38	0	0	38	29	0	0	29	16	0	0	16
131305- English Education	36	2	0	38	33	2	0	35	40	0	0	40
131311- Mathematics Education	29	3	0	32	24	2	0	26	19	1	0	20
131312- Music Education	97	0	0	97	93	0	0	93	58	0	0	58
131314-Physical Education	65	15	0	80	73	10	0	83	53	0	0	53
131316- Science Education	16	1	0	17	8	0	0	8	2	0	0	2
131317- Social Science Education	56	2	0	58	54	0	0	54	43	0	0	43
131320-Indus.Arts and Tech. Edu.	2	3	0	5	2	2	0	4	2	0	0	2
140301- Bio. & Agri. Sys. Engin.	22	0	0	22	25	0	0	25	25	0	0	25
140501-Biomedical Engineering	0	1	0	1	0	1	0	1	0	0	0	0
140701-Chemical Engineering	22	3	0	25	47	4	0	51	47	2	0	49
140801-Civil Engineering	409	9	0	418	136	11	0	147	99	10	0	109



Student Enrollment by Program Category, by Level

1-Undergraduate 3-Unclassified	2-Graduate	Fall 2010				Fall 2011				Fall 2012			
		1	2	3	Total	1	2	3	Total	1	2	3	Total
140901- Computer Engineering		13	0	0	13	71	0	0	71	64	0	0	64
141001-Electrical Engineering		26	8	0	34	83	7	0	90	67	7	0	74
141901-Mechanical Engineering		23	8	0	31	104	4	0	108	79	5	0	84
143501-Industrial Engineering		12	6	0	18	30	4	0	34	23	2	0	25
150201- Civil Engineering Tech		42	0	0	42	14	0	0	14	5	0	0	5
150303- Electronic Engineering Tech		59	0	0	59	66	0	0	66	50	0	0	50
150613- Manu. Engineering Tech		0	0	0	0	0	0	0	0	0	0	0	0
151001- Construction Engi. Tech		65	0	0	65	78	0	0	78	72	0	0	72
160901- French		3	0	0	3	2	0	0	2	0	0	0	0
160905- Spanish		15	0	0	15	9	0	0	9	4	0	0	4
220101-Juris Doctor		0	671	0	671	0	714	0	714	0	662	0	662
230101- English		84	0	0	84	90	0	0	90	89	0	0	89
260101-Biology		793	21	0	814	900	16	0	916	838	18	0	856
260702- Entomology		0	2	0	2	0	1	0	1	0	1	0	1
270101- Mathematics		36	0	0	36	39	0	0	39	37	0	0	37
310504-Sports Management		0	0	0	0	0	0	0	0	0	10	0	10



Student Enrollment by Program Category, by Level

1-Undergraduate 3-Unclassified	2-Graduate	Fall 2010				Fall 2011				Fall 2012			
		1	2	3	Total	1	2	3	Total	1	2	3	Total
389999- Philosophy & Religion		20	0	0	20	24	0	0	24	19	0	0	19
400501-Chemistry		147	17	0	164	130	14	0	144	100	9	0	109
400801-Physics		26	17	0	43	22	13	0	35	18	10	0	28
420101- Psychology		494	0	0	494	565	0	0	565	472	0	0	472
422802-Community Psychology		0	25	0	25	0	21	0	21	0	28	0	28
422805-School Psychology		0	19	0	19	0	12	0	12	0	3	0	3
430104-Criminal Justice		833	0	0	833	891	0	0	891	835	0	0	835
440701-Social Work		204	64	0	268	283	65	0	348	298	58	0	356
450101-Social Sciences		0	116	0	116	0	95	0	95	0	91	0	91
450601- Economics		89	0	0	89	86	0	0	86	68	0	0	68
451001- Political Science		328	0	0	328	376	0	0	376	292	0	0	292
451101- Sociology		97	0	0	97	107	0	0	107	121	0	0	121
500409- Graphic Design		168	0	0	168	157	0	0	157	147	0	0	147
500499- Graphic Communications		27	0	0	27	20	0	0	20	9	0	0	9
500501- Theatre		67	0	0	67	75	0	0	75	68	0	0	68
500702- Fine Arts		22	0	0	22	23	0	0	23	22	0	0	22



Student Enrollment by Program Category, by Level

1-Undergraduate 3-Unclassified	2-Graduate	Fall 2010				Fall 2011				Fall 2012			
		1	2	3	Total	1	2	3	Total	1	2	3	Total
500901- Music		0	0	0	0	89	0	0	89	94	0	0	94
500903- Music Performance		63	0	0	63	0	0	0	0	0	0	0	0
500910- Jazz Studies		25	0	0	25	5	0	0	5	3	0	0	3
510000- Health Science		578	0	0	578	720	0	0	720	731	0	0	731
510701-Health Care Administration		230	29	0	259	325	28	0	353	336	28	0	364
510706- Health Information Manage.		74	0	0	74	110	0	0	110	114	0	0	114
510908- Cardiopulmonary Science		73	0	0	73	94	0	0	94	105	0	0	105
512001- Pharmacy		617	327	0	944	620	314	0	934	595	331	0	926
512099-Pharmaceutical Sciences		0	52	0	52	0	57	0	57	0	46	0	46
512201-Public Health		0	54	0	54	0	82	0	82	0	82	0	82
512306- Occupational Therapy		0	34	0	34	0	44	0	44	0	65	0	65
512308-Physical Therapy		0	82	0	82	0	96	0	96	0	109	0	109
513801-Nursing		751	10	0	761	771	21	0	792	608	29	0	637
520201-Business Administration		1,190	81	0	1,271	1,172	104	0	1,276	998	147	0	1,145
520301- Accounting		142	0	0	142	134	0	0	134	167	0	0	167
540101- History		44	0	0	44	53	0	0	53	36	0	0	36
Total		11,147	1,959	171	13,277	11,022	2,009	176	13,207	9,928	1,976	147	12,051



Student Enrollment by Term and by Institutional Classification 2008-09 through 2012-13

	2008-09			2009-10			2010-11			2011-12			2012-13		
Institutional Class.	Summer 2008	Fall 2008	Spring 2009	Summer 2009	Fall 2009	Spring 2010	Summer 2010	Fall 2010	Spring 2011	Summer 2011	Fall 2011	Spring 2012	Summer 2012	Fall 2012	Spring 2013*
Freshman	838	3,493	2,536	1,054	3,914	2,939	1,499	4,385	3,341	1,071	3,778	2,382	693	2,508	1,628
Sophomore	739	1,808	1,847	829	1,892	1,944	1,029	2,108	2,183	699	2,047	2,317	711	2,219	2,012
Junior	913	1,640	1,685	957	1,742	1,878	1,089	1,981	2,006	892	1,963	2,017	868	1,985	2,137
Senior	1,749	2,510	2,485	1,575	2,289	2,440	1,661	2,440	2,688	1,473	2,614	2,784	1,506	2,621	2,743
Graduate	578	1,042	1,015	633	1,045	1,020	589	1,156	1,118	541	981	853	507	855	827
First Prof.	566	1,166	1,100	569	1,194	1,130	615	1,036	1,026	665	1,648	1,669	743	1,716	1,636
Unclassified	106	189	175	73	185	172	75	171	143	27	176	153	32	147	117
Total	5,489	11,848	10,843	5,690	12,261	11,523	6,557	13,277	12,505	5,368	13,207	12,175	5,060	12,051	11,100

*Spring 2013 Preliminary Data



Student Enrollment by Semester and by Student Classification 2008-09 through 2012-13

	2008-09			2009-10			2010-11			2011-12			2012-13		
Student Class.	Summer 2008	Fall 2008	Spring 2009	Summer 2009	Fall 2009	Spring 2010	Summer 2010	Fall 2010	Spring 2011	Summer 2011	Fall 2011	Spring 2012	Summer 2012	Fall 2012	Spring 2013*
Lower Division Undergraduate	2,171	6,379	5,539	2,557	6,978	6,216	3,301	7,919	7,549	2,656	8,258	5,772	1,916	5,840	5,028
Upper Division Undergraduate	2,239	3,331	3,262	2,014	3,105	3,215	2,140	3,228	2,914	1,698	2,764	4,318	2,078	4,088	4,062
Beginning Graduate	892	1,850	1,767	974	1,891	1,824	955	1,854	1,786	907	1,897	1,796	941	1,851	1,779
Advanced Graduate	81	99	100	72	102	96	86	105	113	80	112	136	93	125	114
Unclassified	106	189	175	73	185	172	75	171	143	27	176	153	32	147	117
Total	5,489	11,848	10,843	5,690	12,261	11,523	6,557	13,277	12,505	5,368	13,207	12,175	5,060	12,051	11,100

*Spring 2013 Preliminary Data

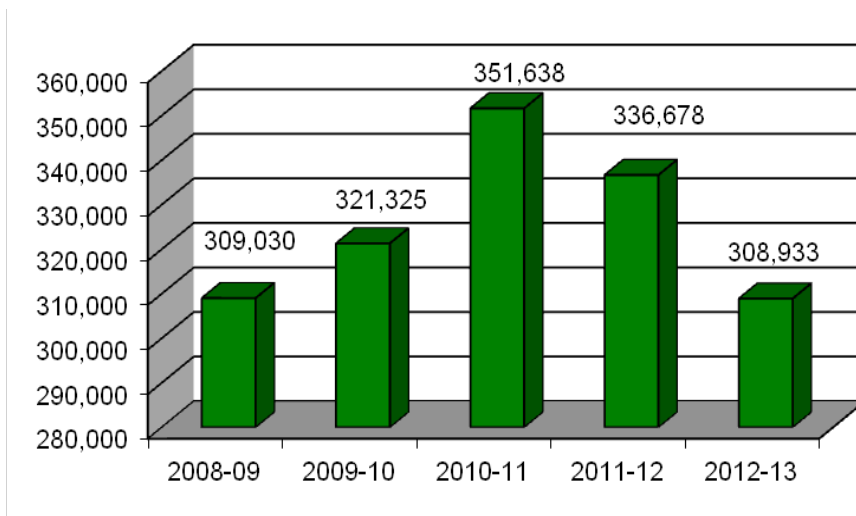


Full-time vs. Part-time Students by School/College, by Level Fall 2012

	Undergraduate			Graduate			Unclassified			Total
	Full	Part	All	Full	Part	All	Full	Part	All	
College of Science and Technology	1,090	153	1,243	46	17	63	0	0	0	1,306
College of Agriculture and Food Sciences	222	30	252	15	10	25	0	0	0	277
College of Education	409	40	449	46	65	111	0	0	0	560
College of Engineering	354	25	379	22	4	26	0	0	0	405
College of Law	0	0	0	636	26	662	0	0	0	662
College of Pharmacy	570	25	595	421	37	458	0	0	0	1,053
College of Social Sciences, Arts and Humanities	2,186	205	2,391	123	56	179	0	0	0	2,570
Other	391	31	422	1	1	2	19	128	147	571
School of Allied Health Sciences	1,170	113	1,283	191	11	202	0	0	0	1,485
School of Architecture	276	42	318	31	4	35	0	0	0	353
School of Business and Industry	1,143	90	1,233	135	14	149	0	0	0	1,382
School of Journalism	678	54	732	1	3	4	0	0	0	736
School of Nursing	559	49	608	27	2	29	0	0	0	637
School of the Environment	21	2	23	24	7	31	0	0	0	54
Total	9,069	859	9,928	1,719	257	1,976	19	128	147	12,051



Student Credit Hours Generated by Level 2008-09 through 2012-13* (preliminary)

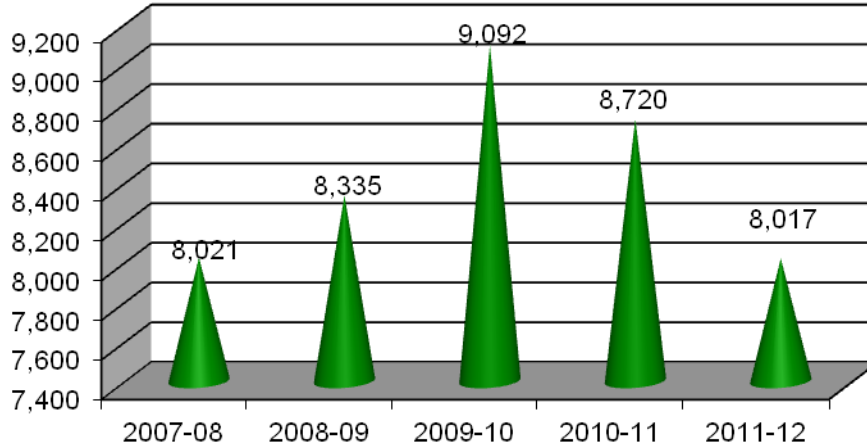


LEVEL	08-09 Total SCH	09-10 Total SCH	10-11 Total SCH	11-12 Total SCH	12-13 Total SCH*
REMEDIAL	5,640	7,446	8,586	5,532	3,555
LOWER	143,819	153,267	176,213	162,652	140,822
TOTAL LOWER	149,459	160,713	184,799	168,184	144,377
UPPER	112,256	112,235	118,616	119,945	117,640
GRADUATE I	45,767	20,647	17,692	15,991	13,907
GRADUATE II	1,548	27,730	30,531	32,558	33,009
TOTAL GRADUATE	47,315	48,377	48,223	48,549	46,916
GRAND TOTAL	309,030	321,325	351,638	336,678	308,933

*Spring 2013 Preliminary Data



Annual Full-Time Equivalency (FTE) 2008-09 through 2012-13* (preliminary)



Level	08-09 FTE	09-10 FTE	10-11 FTE	11-12	12-13 FTE*
REMEDIAL	141	186	215	138	89
LOWER	3,595	3,832	4,405	4,066	3,521
TOTAL LOWER	3,736	4,018	4,620	4,205	3,609
UPPER	2,806	2,806	2,965	2,999	2,941
GRADUATE I	1,430	645	553	500	435
GRADUATE II	48	867	954	1,017	1,032
TOTAL GRADUATE	1,479	1,512	1,507	1,517	1,466
GRAND TOTAL	8,021	8,335	9,092	8,720	8,017

*Spring 2013 Preliminary Data



FTIC Graduation and Retention Rates 2002 – 2010

	2002	2003	2004	2005	2006	2007	2008	2009	2010
Cohort Size	2,284	2,565	2,261	1,681	1,642	1,869	2,067	2,352	2,729
1st Year									
# Graduated	0	1	0	1	0	0	0	0	0
% Graduated	0.00%	0.04%	0.00%	0.06%	0.00%	0.00%	0.00%	0.00%	0.00%
# Retained	2,284	2,565	2,261	1,681	1,642	1,869	2,067	2,352	2,729
% Retained	100.00%	100.00%	100.00%	100.00%	100.00%	100.00%	100.00%	100.00%	100.00%
2nd Year									
# Graduated	2	3	2	4	0	1	1	1	0
% Graduated	0.09%	0.12%	0.09%	0.24%	0.00%	0.05%	0.05%	0.04%	0.00%
# Retained	1,944	2,167	1,827	1,376	1,370	1,592	1,657	1,954	2,202
% Retained	85.11%	84.48%	80.80%	81.86%	83.43%	85.18%	80.16%	83.08%	80.69%
3rd Year									
# Graduated	22	17	17	12	5	4	7	11	
% Graduated	0.96%	0.66%	0.75%	0.71%	0.30%	0.21%	0.34%	0.47%	
# Retained	1,703	1,865	1,615	1,184	1,168	1,368	1,425	1,609	
% Retained	74.56%	72.71%	71.43%	70.43%	71.13%	73.19%	68.94%	68.41%	
4th Year									
# Graduated	282	298	270	186	157	217	248		
% Graduated	12.35%	11.62%	11.94%	11.06%	9.56%	11.61%	12.00%		
# Retained	1,554	1,679	1,454	1,077	1,023	1,231	1,253		
% Retained	68.04%	65.46%	64.31%	64.07%	62.30%	65.86%	60.62%		
5th Year									
# Graduated	635	699	672	450	428	544			
% Graduated	27.80%	27.25%	29.72%	26.77%	26.07%	29.11%			
# Retained	1,443	1,529	1,320	997	967	1,146			
% Retained	63.18%	59.61%	58.38%	59.31%	58.89%	61.32%			
6th Year									
# Graduated	932	1,027	926	664	647				
% Graduated	40.81%	40.04%	40.96%	39.50%	39.40%				
# Retained	1,298	1,423	1,226	914	906				
% Retained	56.83%	55.48%	54.22%	54.37%	55.18%				
7th Year									
# Graduated	1,054	1,164	1,035	748					
% Graduated	46.15%	45.38%	45.78%	44.50%					
# Retained	1,233	1,343	1,181	877					
% Retained	53.98%	52.36%	52.23%	52.17%					
8th Year									
# Graduated	1,108	1,213	1,087						
% Graduated	48.51%	47.29%	48.08%						
# Retained	1,191	1,322	1,155						
% Retained	52.15%	51.54%	51.08%						

