



*Florida A & M University
2011-2012 Fact Book*

**Student
Enrollment**



Tuition and Fees 2011-2012

Fees Per Credit Hour	Undergraduate		Graduate		Law	
	Resident	Non-Resident	Resident	Non-Resident	Resident	Non-Resident
Tuition	\$103.32	\$103.32	\$290.55	\$290.55	\$330.23	\$330.23
Student Financial Aid Fee	\$5.16	\$5.16	\$14.52	\$14.52	\$16.50	\$16.50
Building Fee	\$2.32	\$2.32	\$2.32	\$2.32	\$2.32	\$2.32
Capital Improvement Trust Fund Fee	\$2.44	\$2.44	\$2.44	\$2.44	\$2.44	\$2.44
Activity and Service Fee	\$10.50	\$10.50	\$10.50	\$10.50	\$10.50	\$10.50
Athletic Fee	\$13.97	\$13.97	\$13.97	\$13.97	\$13.97	\$13.97
Technology Fee	\$5.16	\$5.16	\$14.52	\$14.52	\$16.50	\$16.50
Non-Residents shall be assessed the following two additional fees:						
Non- Resident Fee		\$379.07		\$587.02		\$611.46
Non-Resident Financial Aid Fee		\$18.95		\$29.35		\$30.57
Total Fees Per Credit Hour	\$142.87	\$540.89	\$348.82	\$965.19	\$392.46	\$1,034.49

Other Required Fees

Health Fee

\$59.00 per semester for students registered for six hours or more

Orientation Fee

\$35.00 Students who are enrolled for the first time

Transportation and Access Fee

\$65.00 for Fall Semester and \$65.00 for Spring Semester
\$33.00 for Summer Semester

ID Card

\$5.00 per semester (Not charged in Summer)

Materials and Supply Fees

\$15.00 – \$300.00 (per applicable course)

Late Payment Fee

\$100.00

Late Registration Fee

\$100.00

Repeat Course Surcharge

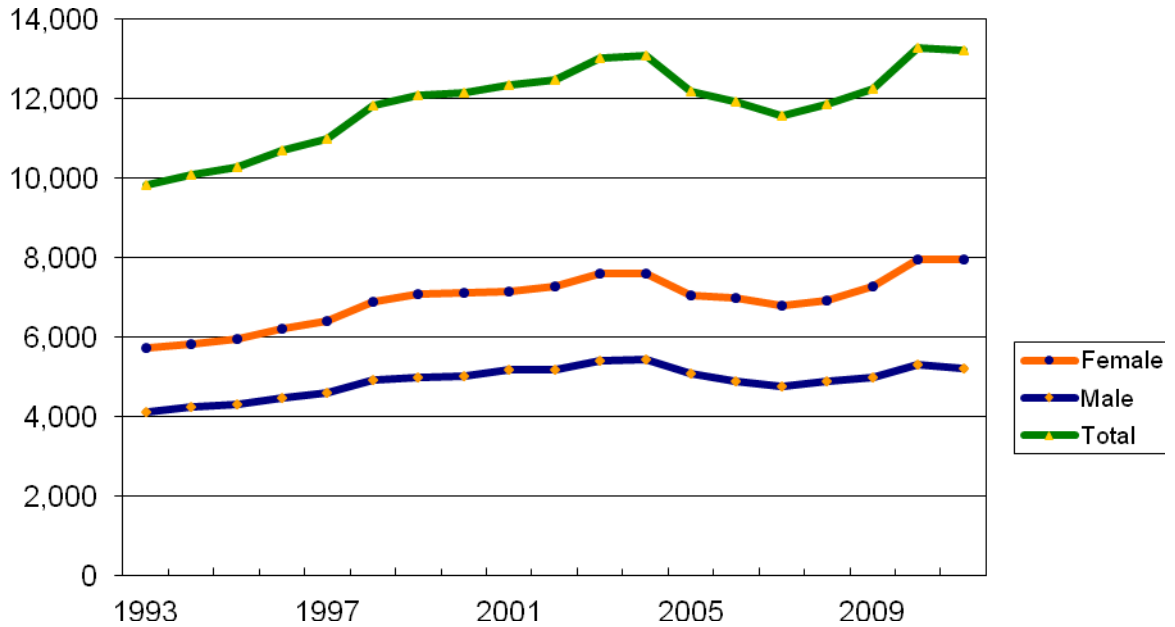
\$159.87 for regular courses taken at least the third time
\$185.42 for College Preparatory (C-Prep) courses taken at least the third time

Differential Fee

Undergraduate students whose date of enrollment was on or after July 1, 2007 will be assessed an additional tuition differential of \$21.42 per credit hour



Historical Enrollment by Gender Fall Semesters 1993 - 2011



Fall	Female		Male		Total	Fall	Female		Male		Total
	#	%	#	%			#	%	#	%	
1993	5,721	58.2%	4,109	41.8%	9,830	2002	7,273	58.3%	5,195	41.7%	12,468
1994	5,828	57.8%	4,256	42.2%	10,084	2003	7,620	58.5%	5,403	41.5%	13,023
1995	5,967	58.1%	4,310	41.9%	10,277	2004	7,618	58.3%	5,449	41.7%	13,070
1996	6,228	58.2%	4,472	41.8%	10,700	2005	7,070	58.1%	5,104	41.9%	12,177
1997	6,408	58.3%	4,592	41.7%	11,000	2006	7,001	58.8%	4,909	41.2%	11,913
1998	6,895	58.3%	4,942	41.7%	11,837	2007	6,783	58.6%	4,784	41.4%	11,567
1999	7,097	58.7%	5,003	41.3%	12,100	2008	6,940	58.6%	4,908	41.4%	11,848
2000	7,135	58.7%	5,026	41.3%	12,161	2009	7,279	59.4%	4,982	40.6%	12,261
2001	7,166	58.0%	5,183	42.0%	12,349	2010	7,964	60.0%	5,313	40.0%	13,277
						2011	7,973	60.4%	5,234	39.6%	13,207



Student Enrollment by School/College/Major/Gender Fall 2011

Program	Female	Percent	Male	Percent	Total
College of Agriculture and Food Sciences					
31101-Agri-Business	16	41.00%	23	59.00%	39
31201-Agricultural Science	9	52.90%	8	47.10%	17
31202-Animal Science	61	73.50%	22	26.50%	83
31204-Agronomy	5	55.60%	4	44.40%	9
31205-Ent & Strctl Pest Control	4	50.00%	4	50.00%	8
31206-Ornamental Horticulture	1	20.00%	4	80.00%	5
31207-Food Science	44	74.60%	15	25.40%	59
31208-Veterinary Technology	5	71.40%	2	28.60%	7
31282-Agricultural Science Grad	8	66.70%	4	33.30%	12
31283-Food Science Grad	1	100.00%	0	0.00%	1
31284-Agribusiness	1	100.00%	0	0.00%	1
31285-Animal Science Grad	1	100.00%	0	0.00%	1
31286-Entomology	2	66.70%	1	33.30%	3
31287-Plant Sciences	2	66.70%	1	33.30%	3
31291-Entomology Doctoral	0	0.00%	1	100.00%	1
31501-Landscape Design & Management	3	21.40%	11	78.60%	14
31601-Bio & Agric Sys Engineering	8	32.00%	17	68.00%	25
31701-International Agriculture	4	50.00%	4	50.00%	8
33102-Construct Engin Techn Main Cmp	0	0.00%	11	100.00%	11
33201-Civil Engineering Technology	1	33.30%	2	66.70%	3
33401-Electronic Engin Tech Main Cmp	1	33.30%	2	66.70%	3
Total	177	56.55%	136	43.45%	313

College of Arts and Sciences

20181-Arts And Sciences -Qualifying	0	0.00%	1	100.00%	1
21100-Pre-Music Education	4	30.80%	9	69.20%	13
21101-Music	16	30.80%	36	69.20%	52
21102-Music Education	16	29.10%	39	70.90%	55
21105-Jazz Studies	1	20.00%	4	80.00%	5
21106-Music Industry	7	15.90%	37	84.10%	44
22101-Philosophy & Religion	5	38.50%	8	61.50%	13
22102-Philosophy	3	42.90%	4	57.10%	7
22103-Religious Studies	0	0.00%	4	100.00%	4
22201-Theatre	46	65.70%	24	34.30%	70
22202-Theatre Education	1	100.00%	0	0.00%	1
22301-Fine Arts	16	69.60%	7	30.40%	23
23100-English	17	81.00%	4	19.00%	21
23101-English	59	65.60%	31	34.40%	90
23102-elementary ed	11	91.70%	1	8.33%	12
23201-French	1	50.00%	1	50.00%	2
23202-Spanish	7	77.80%	2	22.20%	9
24101-Biology	301	68.30%	140	31.70%	441



Student Enrollment by School/College/Major/Gender Fall 2011

Program	Female	Percent	Male	Percent	Total
College of Arts and Sciences (cont)					
24102-Pre-Dentistry	43	75.40%	14	24.60%	57
24103-Pre-Medicine	278	76.60%	85	23.40%	363
24105-Molecular Biology	33	84.60%	6	15.40%	39
24181-Cellular/Molecular Biology	8	61.50%	5	38.50%	13
24183-Physiology	2	66.70%	1	33.30%	3
24201-Chemistry	58	65.90%	30	34.10%	88
24202-Chemistry Education	1	100.00%	0	0.00%	1
24203-Chem Pre-med/Dent	15	71.40%	6	28.60%	21
24204-Chem/Molecular Biology	11	50.00%	11	50.00%	22
24281-Chemistry - Grad	10	71.40%	4	28.60%	14
24300-Pre-Mathematics Education	7	58.30%	5	41.70%	12
24301-Mathematical Sciences	6	60.00%	4	40.00%	10
24303-Mathematics	11	47.80%	12	52.20%	23
24304-Actuarial Science	1	14.30%	6	85.70%	7
24401-Physics	8	36.40%	14	63.60%	22
24402-Physics Education	1	100.00%	0	0.00%	1
24481-Physics Grad	0	0.00%	1	100.00%	1
24491-Physics-Doctoral	2	16.70%	10	83.30%	12
25000-Pre-History Education	4	50.00%	4	50.00%	8
25100-Pre-History Education	3	42.90%	4	57.10%	7
25101-History & Geography	19	35.80%	34	64.20%	53
25102-History Education	1	25.00%	3	75.00%	4
25103-African-American Studies	12	50.00%	12	50.00%	24
25201-Economics	2	66.70%	1	33.30%	3
25300-Pre-Political Science Education	0	0.00%	1	100.00%	1
25301-Political Science	164	53.60%	142	46.40%	306
25302-Public Management	1	25.00%	3	75.00%	4
25303-Political Sci/Publ Admin Conc	21	51.20%	20	48.80%	41
25304-Political Science Education	0	0.00%	1	100.00%	1
25305-Political Science	16	64.00%	9	36.00%	25
26101-Psychology	423	74.90%	142	25.10%	565
26181-Community Psychology	12	57.10%	9	42.90%	21
26182-School Psychology	0	0.00%	1	100.00%	1
27100-Pre-Social Work	105	80.20%	26	19.80%	131
27101-Criminal Justice 2ND	449	50.40%	442	49.60%	891
27102-Social Work	130	85.50%	22	14.50%	152
27103-Sociology	57	59.40%	39	40.60%	96
27183-Soc Sci-Pol Sc Grad	8	80.00%	2	20.00%	10
27184-Soc Sci-Pub Mgmt Grad	1	100.00%	0	0.00%	1
27185-Sociology - Grad	0	0.00%	1	100.00%	1
27186-Social Work Grad	52	80.00%	13	20.00%	65
27187-Public Administration Grad	36	76.60%	11	23.40%	47
27188-History - Grad	1	14.30%	6	85.70%	7



Student Enrollment by School/College/Major/Gender Fall 2011

Program	Female	Percent	Male	Percent	Total
College of Arts and Sciences (cont)					
27189-Criminal Justices - Grad	21	72.40%	8	27.60%	29
28100-Pre-Computer Info Systems	19	33.90%	37	66.10%	56
28101-Data Processing Technology	1	100.00%	0	0.00%	1
28102-Comp Info Systems	33	27.70%	86	72.30%	119
28103-Comp Info Science	15	35.70%	27	64.30%	42
28104-Information Technology	18	35.30%	33	64.70%	51
28181-Software Engineering Science	9	42.90%	12	57.10%	21
28182-Computer Science	1	25.00%	3	75.00%	4
Total	2,640	60.55%	1,720	39.45%	4,360
College of Education					
10181-Education-Qualifying Graduate	2	66.70%	1	33.30%	3
11100-Pre-Music Teacher Education	2	20.00%	8	80.00%	10
11103-MusicTchr Ed:Instr-Wind,Piano	3	30.00%	7	70.00%	10
11104-MusicTchr Ed:Choral Music-Voic	4	80.00%	1	20.00%	5
11181-Educ. Leadership & Admin.	23	74.20%	8	25.80%	31
11182-Counselor Education	31	88.60%	4	11.40%	35
11191-Educational Leadership-Doctoral	30	65.20%	16	34.80%	46
12000-Pre-Elementary Edu	168	84.80%	30	15.20%	198
12100-Pre-Early Childhood Edu	38	92.70%	3	7.32%	41
12101-Elementary Education	50	87.70%	7	12.30%	57
12102-Pre-Elem/Early Child Edu	13	92.90%	1	7.14%	14
12200-Pre-Drama Education	1	100.00%	0	0.00%	1
12202-Drama Education	3	100.00%	0	0.00%	3
12302-Art Education	1	100.00%	0	0.00%	1
13181-English Educ Grad	2	100.00%	0	0.00%	2
13183-Math Education Grad	2	100.00%	0	0.00%	2
14100-Pre-Physical Education	16	29.10%	39	70.90%	55
14101-Physical Education	5	27.80%	13	72.20%	18
14104-Biology Education	3	75.00%	1	25.00%	4
14181-Physical Educ Grad	1	12.50%	7	87.50%	8
14202-Chemistry Education	1	100.00%	0	0.00%	1
14281-Sport Management Grad	2	100.00%	0	0.00%	2
14302-Mathematics Education	7	58.30%	5	41.70%	12
14402-Physics Education	0	0.00%	1	100.00%	1
15000-Pre-Business Edu	1	25.00%	3	75.00%	4
15100-Pre-Technology Education	1	100.00%	0	0.00%	1
15101-Business Education	0	0.00%	2	100.00%	2
15102-Office Administration	18	78.30%	5	21.70%	23
15104-Technology Education	0	0.00%	1	100.00%	1
15184-Technology Education Grad	1	50.00%	1	50.00%	2
15202-History Education	11	44.00%	14	56.00%	25
15304-Political Science Education	2	25.00%	6	75.00%	8



Student Enrollment by School/College/Major/Gender Fall 2011

Program	Female	Percent	Male	Percent	Total
College of Education (cont)					
16161-School Psychology-Specl	7	63.60%	4	36.40%	11
Total	449	70.49%	188	29.51%	637
College of Law					
E1171-JURIS DOCTOR	276	53.40%	241	46.60%	517
E1172-Law Professional 2	107	54.30%	90	45.70%	197
Total	383	53.64%	331	46.36%	714
College of Pharmacy and Pharmaceutical Sciences					
B0100-Pre-Pharmacy	0	0.00%	3	100.00%	3
B1171-Pharmacy Professional	653	70.20%	277	29.80%	930
B1181-Pharmaceutical Science	9	75.00%	3	25.00%	12
B1182-Public Health	47	77.00%	14	23.00%	61
B1191-Pharmacy Doctoral	27	60.00%	18	40.00%	45
B1192-Public Health Doctoral	17	81.00%	4	19.00%	21
Total	753	70.24%	319	29.76%	1,072
Other					
91101-Unclassified Undergrad	6	54.50%	5	45.50%	11
91181-Unclassified Graduate	27	61.40%	17	38.60%	44
911E2-NON-DEGREE TRANSIENT LAW PT	0	0.00%	2	100.00%	2
92281-Grad Special Stud -Off Campus	1	100.00%	0	0.00%	1
94401-High School Dual Enrolled	15	93.80%	1	6.25%	16
95501-Community College Dual Enroll	3	15.00%	17	85.00%	20
96601-Transient Student	1	100.00%	0	0.00%	1
97701-FAMU-FSU Cooperative Program	36	45.60%	43	54.40%	79
99901-Int'l Exchange Program-UG	1	25.00%	3	75.00%	4
Total	90	50.56%	88	49.44%	178
FAMU/FSU College of Engineering					
40100-Pre-Engineering	4	12.50%	28	87.50%	32
41100-Pre-Engr Civil/Environment	18	20.70%	69	79.30%	87
41101-Civil Engineering	2	12.50%	14	87.50%	16
41102-Civil Engineering-Environ Eng	0	0.00%	1	100.00%	1
41181-Civil Engineering Grad	5	83.30%	1	16.70%	6
41182-Civil Engineer Grad (MEng)	0	0.00%	1	100.00%	1
41191-Civil Engineering - Doctoral	2	50.00%	2	50.00%	4
42100-Pre-Engr Electrical	9	15.80%	48	84.20%	57
42101-Electrical Engineering	4	15.40%	22	84.60%	26
42102-Computer Engineering	2	22.20%	7	77.80%	9
42181-Electrical Engineering Grad	1	20.00%	4	80.00%	5
42191-Electrical Engineering Doctor	0	0.00%	2	100.00%	2
42200-Pre-Engr Computer Eng	17	27.40%	45	72.60%	62



Student Enrollment by School/College/Major/Gender Fall 2011

Program	Female	Percent	Male	Percent	Total
FAMU/FSU College of Engineering (cont)					
44100-Pre-Engr Chem/BioMed	10	33.30%	20	66.70%	30
44101-Chemical Engineering	6	66.70%	3	33.30%	9
44104-Chem Engr-Engineering Material	0	0.00%	1	100.00%	1
44105-Chem Engr -Biomedical Engineer	4	57.10%	3	42.90%	7
44181-Chemical Engineering Grad	1	100.00%	0	0.00%	1
44182-Biomedical Engineering Grad	1	100.00%	0	0.00%	1
44191-Chemical Engineering-Doctoral	2	66.70%	1	33.30%	3
45100-Pre-Engr Mechanical Engr	15	19.20%	63	80.80%	78
45101-Mechanical Engineering	3	11.50%	23	88.50%	26
45181-Mechanical Engineering Grad	1	100.00%	0	0.00%	1
45191-Mechanical Engineering-Doctora	2	66.70%	1	33.30%	3
46100-Pre-Engr Industrial Engr	4	26.70%	11	73.30%	15
46101-Industrial Engineering	8	53.30%	7	46.70%	15
46181-Industrial Engineering Grad	1	25.00%	3	75.00%	4
Total	122	24.30%	380	75.70%	502
School of General Studies					
81101-General Studies	21	72.40%	8	27.60%	29
81201-LDEC	15	45.50%	18	54.50%	33
81301-GENERAL STUDIES	97	47.50%	107	52.50%	204
81302-General Education- Summer	97	53.30%	85	46.70%	182
Total	230	51.34%	218	48.66%	448
School of Allied Health Sciences					
C0100-Pre-Health Care	94	69.60%	41	30.40%	135
C0200-Pre-Health Information Mgmt	11	84.60%	2	15.40%	13
C0400-Pre-Cardiopumunary Science	46	88.50%	6	11.50%	52
C1101-Health Care Management	141	74.20%	49	25.80%	190
C1181-Health Care Administration	22	78.60%	6	21.40%	28
C2101-Health Information Mgmt	78	80.40%	19	19.60%	97
C3181-Physical Therapy Graduate	5	55.60%	4	44.40%	9
C3191-Doctor of Physical Therapy	63	72.40%	24	27.60%	87
C4101-Cardiopulmonary Science	28	66.70%	14	33.30%	42
C5181-Occupational Therapy Grad	37	84.10%	7	15.90%	44
C6101-Health Sci - Pre-Physical Therapy	292	60.10%	194	39.90%	486
C6102-Health Science-Occ/Well	184	78.60%	50	21.40%	234
Total	1,001	70.64%	416	29.36%	1,417
School of Architecture					
70100-Pre-Architecture	44	37.00%	75	63.00%	119
71101-Architecture Bachelor	24	32.90%	49	67.10%	73
71171-Architecture: 1st P	3	42.90%	4	57.10%	7
71181-Architecture - Grad	15	35.70%	27	64.30%	42



Student Enrollment by School/College/Major/Gender Fall 2011

Program	Female	Percent	Male	Percent	Total
School of Architecture (cont)					
71182-Architecture - Grad (MS)	3	42.90%	4	57.10%	7
71183-Landscape Architecture	5	50.00%	5	50.00%	10
73102-Construction Engineering Tech	7	10.40%	60	89.60%	67
73201-Civil Engineering Technology	2	18.20%	9	81.80%	11
73401-Electronic Engineering Tech	11	17.50%	52	82.50%	63
Total	114	28.57%	285	71.43%	399
School of Business and Industry					
50181-Business Admin-qualifying Grad	1	50.00%	1	50.00%	2
51100-Pre-Accounting	2	100.00%	0	0.00%	2
51101-Accounting	69	52.30%	63	47.70%	132
52101-Business Administration	164	49.40%	168	50.60%	332
52102-Management	23	48.90%	24	51.10%	47
52181-2 Year MBA	52	65.00%	28	35.00%	80
52182-Business Admin Five-Year MBA	20	83.30%	4	16.70%	24
53101-Pre-Business	372	46.90%	421	53.10%	793
55201-Economics with Minor Business	25	30.10%	58	69.90%	83
Total	728	48.70%	767	51.30%	1,495
School of Journalism and Graphic Communication					
60100-Pre-Journalism	195	65.70%	102	34.30%	297
61101-Newspaper Journalism	6	66.70%	3	33.30%	9
61102-Magazine Production	20	80.00%	5	20.00%	25
61103-Broadcast Journalism	113	69.80%	49	30.20%	162
61104-Public Relations	105	71.40%	42	28.60%	147
61181-Journalism Grad	5	62.50%	3	37.50%	8
62101-Graphics Production	3	60.00%	2	40.00%	5
62102-Photography	13	68.40%	6	31.60%	19
62103-Graphics Management	1	100.00%	0	0.00%	1
62104-Graphic Design	60	39.50%	92	60.50%	152
Total	521	63.15%	304	36.85%	825
School of Nursing					
D0100-Pre-Nursing	562	91.10%	55	8.91%	617
D1101-Nursing	144	92.90%	11	7.10%	155
D1181-Nursing Grad	20	95.20%	1	4.76%	21
Total	726	91.55%	67	8.45%	793
School of the Environment					
01101-Environ Sciences	15	68.20%	7	31.80%	22
01181-Environmental Science	7	63.60%	4	36.40%	11
01191-Environmental Science Doctoral	17	81.00%	4	19.00%	21
Total	39	72.22%	15	27.78%	54
Grand Total	7,973	60.37%	5,234	39.63%	13,207



Student Enrollment by Ethnic Origin Fall 2007 through Fall 2011

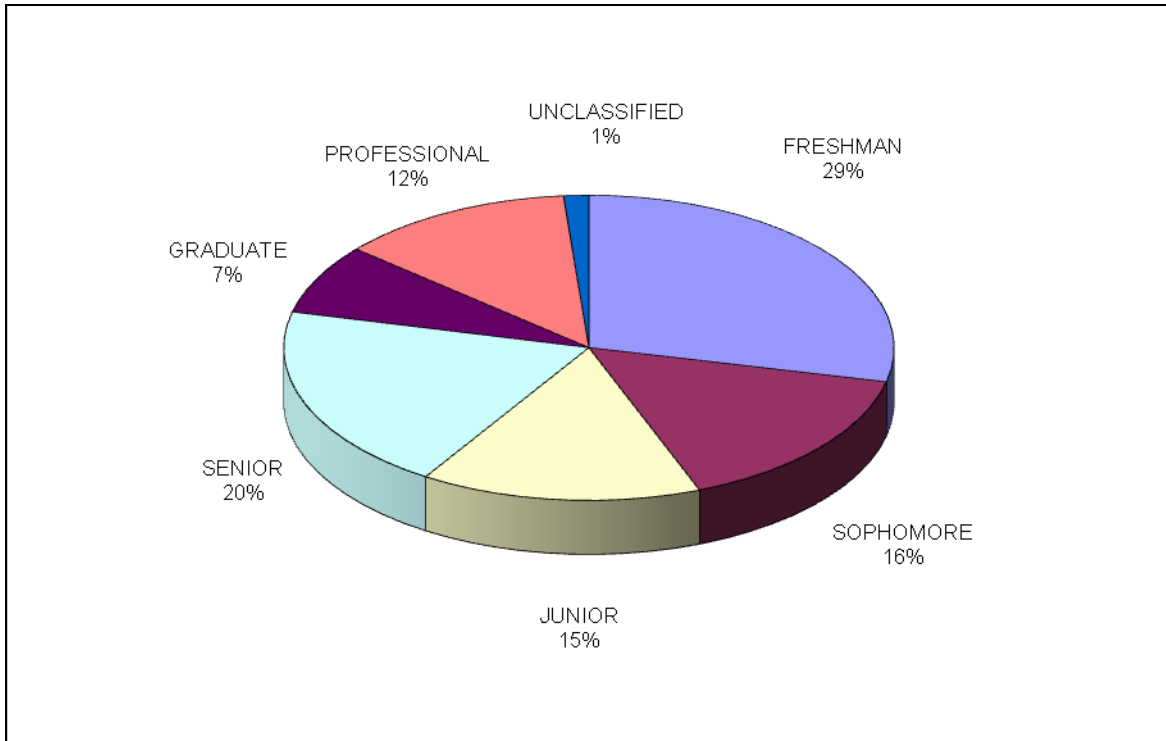
	Non-Resi. Alien	Hispanic	Amer-Indian	Asian	Black	White	Multiple Races	Unkown	All
Fall 2007	134	232	22	125	10,423	562	0	69	11,567
Fall 2008	131	268	27	141	10,631	596	0	54	11,848
Fall 2009	113	261	23	155	11,123	586	0	0	12,261
Fall 2010	97	207	34	158	12,161	601	19	0	13,277
Fall 2011	118	233	30	140	12,080	593	13	0	13,207

Student Enrollment by Residency Fall 2007 through Fall 2011

	In-State				Out-of-State				All
	Under-graduate	Graduate	Unclassified	Total	Under-graduate	Graduate	Unclassified	Total	
Fall 2007	8,155	1,516	214	9,885	1,478	183	21	1,682	11,567
Fall 2008	8,186	1,706	177	10,069	1,524	243	12	1,779	11,848
Fall 2009	8,587	1,712	169	10,468	1,496	281	16	1,793	12,261
Fall 2010	9,522	1,646	148	11,316	1,625	313	23	1,961	13,277
Fall 2011	9,448	1,673	158	11,279	1,574	336	18	1,928	13,207



Student Enrollment by Institutional Classification Fall 2011

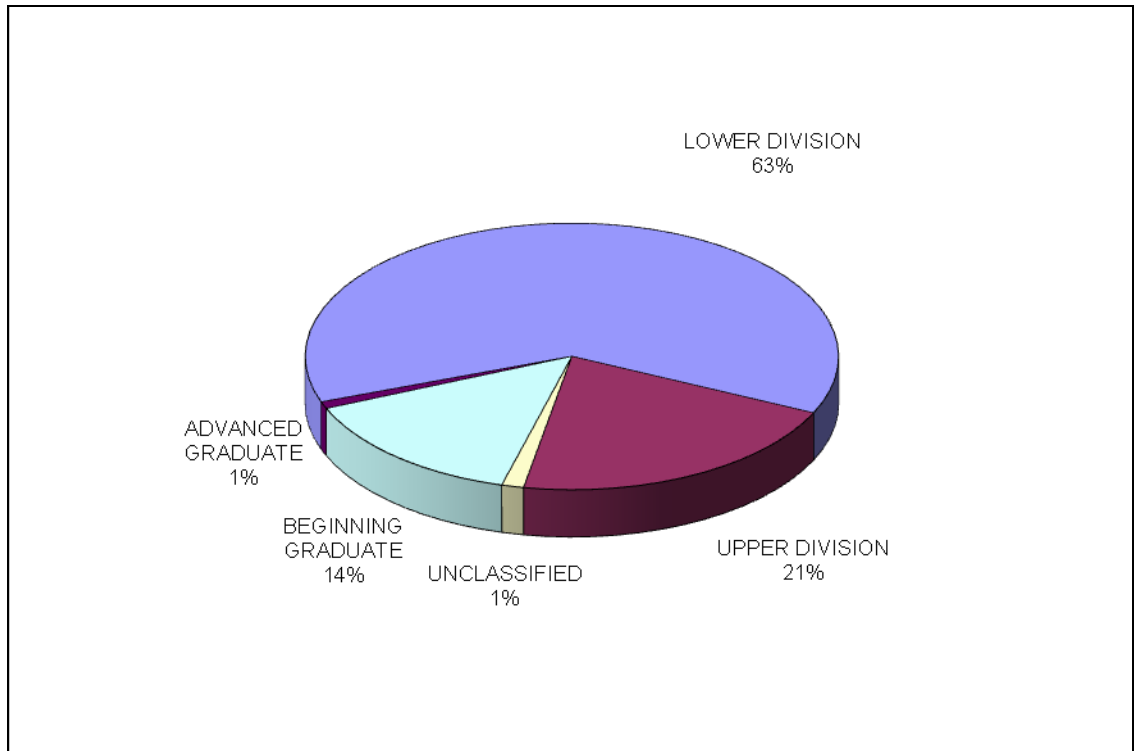


Institutional Classification Level	Fall 2007	Fall 2008	Fall 2009	Fall 2010	Fall 2011
FRESHMAN	3,298	3,493	3,914	4,385	3,778
SOPHOMORE	1,704	1,808	1,892	2,108	2,047
JUNIOR	1,711	1,640	1,742	1,981	1,963
SENIOR	2,616	2,510	2,289	2,440	2,614
GRADUATE	877	1,042	1,045	1,156	981
PROFESSIONAL	1,126	1,166	1,194	1,036	1,648
UNCLASSIFIED	235	189	185	171	176
TOTAL	11,567	11,848	12,261	13,277	13,207

Note: Institutional Classification Level is the categorization of the student's progress, as defined by the institution, at the beginning of the term toward a specific degree program, as anticipated after all transcript evaluation and transfer hours are posted.



Student Enrollment by Student Classification Fall 2011



Classification Level	Fall 2007	Fall 2008	Fall 2009	Fall 2010	Fall 2011
LOWER DIVISION	6,071	6,379	6,978	7,919	8,258
UPPER DIVISION	3,562	3,331	3,105	3,228	2,764
BEGINNING GRADUATE	1,609	1,850	1,891	1,854	1,897
ADVANCED GRADUATE	90	99	102	105	112
UNCLASSIFIED	235	189	185	171	176
TOTAL	11,567	11,848	12,261	13,277	13,207

Note: Student Classification Level is the categorization of the student's progress at the beginning of the term toward a specific degree or certificate as it applies to allocation of resources within the State University System.

Student Enrollment by Florida Counties Fall 2011

County	Undergrad	Grad	Unclas.	Total	County	Undergrad	Grad	Unclas.	Total
Alachua	117	22	0	139	Leon	1,314	318	105	1,737
Baker	4	5	0	9	Levy	4	0	0	4
Bay	55	15	0	70	Liberty	11	2	0	13
Bradford	4	1	0	5	Madison	37	4	3	44
Brevard	160	30	0	190	Manatee	46	9	0	55
Broward	1,470	99	6	1,575	Marion	78	12	0	90
Calhoun	7	2	0	9	Martin	16	3	0	19
Charlotte	7	2	0	9	Monroe	10	0	0	10
Citrus	2	1	1	4	Nassau	23	0	0	23
Clay	71	4	0	75	Non-Florida	1,810	421	11	2,242
Collier	25	6	0	31	Non-USA	66	84	2	152
Columbia	24	5	1	30	Okaloosa	38	8	0	46
Dade	1,228	106	7	1,341	Okeechobee	7	1	0	8
Desoto	4	1	0	5	Orange	610	267	3	880
Dixie	2	0	0	2	Osceola	69	23	0	92
Duval	759	72	3	834	Palm Beach	641	59	5	705
Escambia	152	18	3	173	Pasco	46	15	0	61
Flagler	19	2	0	21	Pinellas	209	34	1	244
Franklin	8	0	0	8	Polk	257	28	3	288
Gadsden	200	41	7	248	Putnam	14	2	0	16
Glades	9	0	0	9	Santa Rosa	22	4	1	27
Gulf	6	2	0	8	Sarasota	40	6	0	46
Hamilton	5	1	0	6	Seminole	104	58	4	166
Hardee	2	0	0	2	St. Johns	25	4	1	30
Hendry	12	2	0	14	St. Lucie	104	7	1	112
Hernando	17	1	0	18	Sumter	19	2	0	21
Highlands	22	4	1	27	Suwannee	18	2	0	20
Hillsborough	583	91	1	675	Taylor	20	3	0	23
Holmes	2	2	0	4	Union	1	0	0	1
Indian River	25	2	1	28	Volusia	87	23	1	111
Jackson	36	12	0	48	Wakulla	30	6	4	40
Jefferson	61	9	0	70	Walton	8	3	0	11
Lafayette	1	1	0	2	Washington	9	2	0	11
Lake	71	24	0	95	All	11,022	2,009	176	13,207
Lee	59	16	0	75					



Student Enrollment by State

Fall 2011

State	Undergrad	Grad	Unclas.	Total	State	Undergrad	Grad	Unclas.	Total
Alaska	1	0	0	1	Minnesota	10	0	0	10
Alabama	88	21	1	110	Missouri	28	6	0	34
Arkansas	3	3	0	6	Mississippi	16	14	1	31
Arizona	8	4	0	12	North Carolina	48	16	0	64
California	71	17	1	89	Nebraska	3	1	0	4
Colorado	7	3	0	10	New Jersey	38	4	0	42
Connecticut	2	1	0	3	Nevada	4	2	0	6
District of Columbia	62	2	0	64	New York	59	18	0	77
Delaware	7	0	1	8	Ohio	45	7	0	52
Florida	9,142	1,493	162	10,797	Oregon	1	0	0	1
Georgia	543	120	2	665	Pennsylvania	23	11	0	34
Hawaii	3	0	0	3	Rhode Island	1	0	0	1
Iowa	2	1	0	3	South Carolina	49	20	0	69
Idaho	1	0	0	1	Tennessee	37	12	0	49
Illinois	149	14	0	163	Texas	97	19	0	116
Indiana	35	3	0	38	Utah	1	0	0	1
Kansas	8	0	0	8	Virginia	54	9	1	64
Kentucky	3	2	0	5	Washington	2	3	0	5
Louisiana	18	8	1	27	Wisconsin	24	3	0	27
Massachusetts	14	3	0	17	West Virginia	1	0	0	1
Maryland	108	11	1	120	None	123	149	5	277
Michigan	83	9	0	92	All	11,022	2,009	176	13,207



Student Enrollment by Age Ranges Fall 2007 - 2011

AGE RANGE	Fall 2007	Fall 2008	Fall 2009	Fall 2010	Fall 2011
18 and Under	1,376	1,485	1,708	1,891	1,372
19-21	4,651	4,719	5,136	5,814	5,983
22-24	3,371	3,361	2,995	3,144	3,306
25-30	1,343	1,409	1,511	1,543	1,597
31-40	507	534	560	557	602
41-64	317	339	347	322	340
65 and Over	2	1	4	6	7
Total	11,567	11,848	12,261	13,277	13,207
Average Age	22	22	22	22	22

Student Enrollment by Institution's Classification and by Age Ranges - Fall 2011

Institutional Classification	Freshman	Sophomore	Junior	Senior	Graduate	1st Prof	Unclass.	Total
18 and Under	1,197	22	4	1	0	123	25	1,372
19-21	2,386	1,727	1,075	379	4	350	62	5,983
22-24	109	229	662	1,508	277	486	35	3,306
25-30	44	51	140	513	409	419	21	1,597
31-40	22	9	49	133	174	194	21	602
41-64	20	9	32	78	116	75	10	340
65 and Over	0	0	1	2	1	1	2	7
Total	3,778	2,047	1,963	2,614	981	1,648	176	13,207



Student Enrollment by Program Category, by Level Fall 2011

CIP	Program Category Name	Undergraduate	Graduate	Unclassified	Total
00	General Studies	448	8	176	632
01	Agriculture, AG Operations and Related Sciences	249	21	0	270
03	Natural Resources and Conservation	22	32	0	54
04	Architecture and Related Services	199	59	0	258
05	Area, Ethnic, Cultural and Gender Studies	24	0	0	24
09	Communication, Journalism and Related Programs	640	8	0	648
11	Computer and Info Sciences and Support Services	268	25	0	293
13	Education	626	128	0	754
14	Engineering	496	31	0	527
15	Engineering Technologies/Technicians	158	0	0	158
16	Foreign Languages, Literatures and Linguistics	11	0	0	11
22	Legal Professions and Studies	0	714	0	714
23	English Language and Literature/Letters	90	0	0	90
26	Biological and Biomedical Sciences	900	17	0	917
27	Mathematics and Statistics	39	0	0	39
38	Philosophy and Religious Studies	24	0	0	24
40	Physical Sciences	152	27	0	179
42	Psychology	565	33	0	598
43	Security and Protective Services	891	0	0	891
44	Public Administration and Social Service Professions	283	65	0	348
45	Social Sciences	569	95	0	664
50	Visual and Performing Arts	369	0	0	369
51	Health Professions and Related Clinical Sciences	2,640	642	0	3,282
52	Business, Mgmt., Mktg and related Support Services	1,306	104	0	1,410
54	History	53	0	0	53
Total		11,022	2,009	176	13,207



Student Enrollment by Term and by Institutional Classification 2007-08 through 2011-12

Institutional Class.	2007-08			2008-09			2009-10			2010-11			2011-12		
	Summer 2007	Fall 2007	Spring 2008	Summer 2008	Fall 2008	Spring 2009	Summer 2009	Fall 2009	Spring 2010	Summer 2010	Fall 2010	Spring 2011	Summer 2011	Fall 2011	Spring 2012*
Freshman	694	3,298	2,441	838	3,493	2,536	1,054	3,914	2,939	1,499	4,385	3,341	1,071	3,778	2,458
Sophomore	647	1,704	1,809	739	1,808	1,847	829	1,892	1,944	1,029	2,108	2,183	699	2,047	2,295
Junior	1,022	1,711	1,675	913	1,640	1,685	957	1,742	1,878	1,089	1,981	2,006	892	1,963	1,961
Senior	1,784	2,616	2,712	1,749	2,510	2,485	1,575	2,289	2,440	1,661	2,440	2,688	1,473	2,614	2,786
Graduate	803	877	882	578	1,042	1,015	633	1,045	1,020	589	1,156	1,118	541	981	985
First Prof.	304	1,126	1,089	566	1,166	1,100	569	1,194	1,130	615	1,036	1,026	665	1,648	1,542
Unclassified	148	235	194	106	189	175	73	185	172	75	171	143	27	176	142
Total	5,402	11,567	10,802	5,489	11,848	10,843	5,690	12,261	11,523	6,557	13,277	12,505	5,368	13,207	12,169

*Spring 2012 Preliminary Data



Student Enrollment by Semester and by Student Classification 2007-08 through 2011-12

	2007-08			2008-09			2009-10			2010-11			2011-12		
Student Class.	Summer 2007	Fall 2007	Spring 2008	Summer 2008	Fall 2008	Spring 2009	Summer 2009	Fall 2009	Spring 2010	Summer 2010	Fall 2010	Spring 2011	Summer 2011	Fall 2011	Spring 2012*
Lower Division Undergraduate	1,993	6,071	5,257	2,171	6,379	5,539	2,557	6,978	6,216	3,301	7,919	7,549	2,656	8,258	7,564
Upper Division Undergraduate	2,314	3,562	3,667	2,239	3,331	3,262	2,014	3,105	3,215	2,140	3,228	2,914	1,698	2,764	2,539
Beginning Graduate	889	1,609	1,582	892	1,850	1,767	974	1,891	1,824	955	1,854	1,786	907	1,897	1,813
Advanced Graduate	58	90	102	81	99	100	72	102	96	86	105	113	80	112	111
Unclassified	148	235	194	106	189	175	73	185	172	75	171	143	27	176	142
Total	5,402	11,567	10,802	5,489	11,848	10,843	5,690	12,261	11,523	6,557	13,277	12,505	5,368	13,207	12,169

*Spring 2012 Preliminary Data

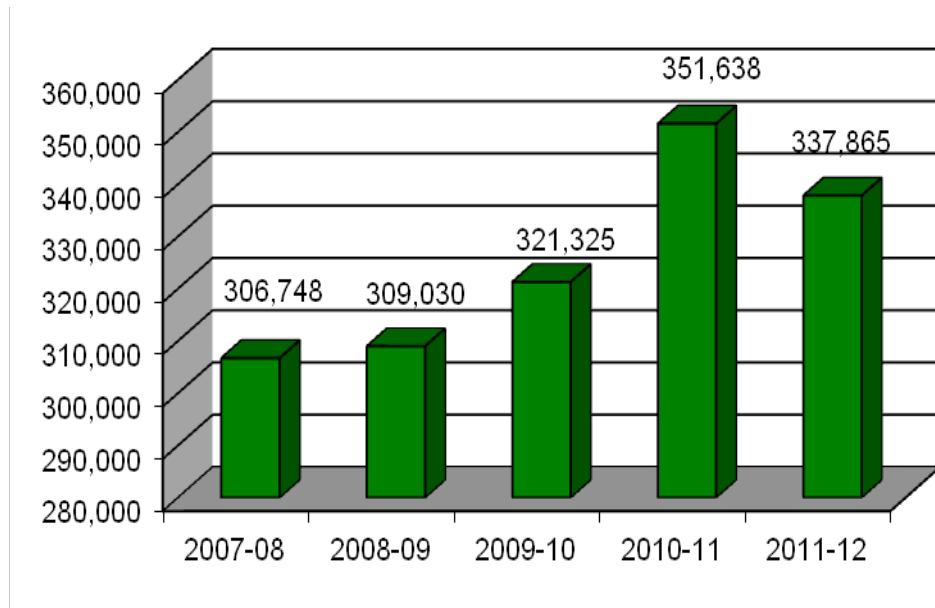


Full-time vs. Part-time Students by School/College, by Level Fall 2011

	Undergraduate			Graduate			Unclassified			All		
	Full	Part	All	Full	Part	All	Full	Part	All	Full	Part	All
Agriculture and Food Sci.	259	32	291	18	4	22	0	0	0	277	36	313
Arts and Sciences	3,771	337	4,108	184	68	252	0	0	0	3,955	405	4,360
Education	445	50	495	55	87	142	0	0	0	500	137	637
Law	0	0	0	682	32	714	0	0	0	682	32	714
Pharmacy	603	17	620	423	29	452	0	0	0	1,026	46	1,072
Continuing ED	0	0	0	1	1	2	20	156	176	21	157	178
Engineering	437	34	471	27	4	31	0	0	0	464	38	502
General Studies	407	41	448	0	0	0	0	0	0	407	41	448
Allied Health Sciences	1,138	111	1,249	160	8	168	0	0	0	1,298	119	1,417
Architecture	295	45	340	56	3	59	0	0	0	351	48	399
Business and Industry	1,282	107	1,389	99	7	106	0	0	0	1,381	114	1,495
Journalism	766	51	817	6	2	8	0	0	0	772	53	825
Nursing	729	43	772	21	0	21	0	0	0	750	43	793
Environmental Sciences	21	1	22	28	4	32	0	0	0	49	5	54
Total	10,153	869	11,022	1,760	249	2,009	20	156	176	11,933	1,274	13,207



Student Credit Hours Generated by Level 2007-08 through 2011-12* (preliminary)

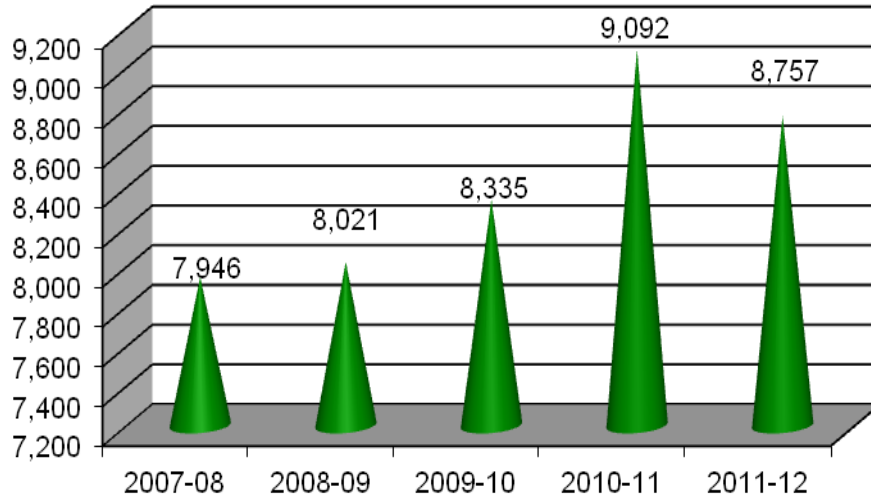


LEVEL	07-08 Total SCH	08-09 Total SCH	09-10 Total SCH	10-11 Total SCH	11-12 Total SCH*
REMEDIAL	5,238	5,640	7,446	8,586	5,538
LOWER	137,492	143,819	153,267	176,213	162,735
TOTAL LOWER	142,730	149,459	160,713	184,799	168,273
UPPER	119,697	112,256	112,235	118,616	119,972
GRADUATE I	42,965	45,767	20,647	17,692	18,314
GRADUATE II	1,356	1,548	27,730	30,531	31,306
TOTAL GRADUATE	44,321	47,315	48,377	48,223	49,620
GRAND TOTAL	306,748	309,030	321,325	351,638	337,865*

*Spring 2012 Preliminary Data



Annual Full-Time Equivalency (FTE) 2007-08 through 2011-12* (preliminary)



Level	07-08 FTE	08-09 FTE	09-10 FTE	10-11 FTE	11-12 FTE*
REMEDIAL	131	141	186	215	139
LOWER	3,437	3,595	3,832	4,405	4,068
TOTAL LOWER	3,568	3,736	4,018	4,620	4,207
UPPER	2,992	2,806	2,806	2,965	2,999
GRADUATE I	1,343	1,430	645	553	572
GRADUATE II	42	48	867	954	978
TOTAL GRADUATE	1,385	1,478	1,512	1,507	1,550
GRAND TOTAL	7,946	8,021	8,335	9,092	8,757*

*Spring 2012 Preliminary Data



Graduation and Retention Rates 2001 – 2009

	2001	2002	2003	2004	2005	2006	2007	2008	2009
Cohort Size	2,396	2,284	2,565	2,261	1,681	1,642	1,869	2,067	2,352
1st Year									
# Graduated	3	0	1	0	1	0	0	0	0
% Graduated	0.1%	0.0%	0.0%	0.0%	0.1%	0.0%	0.0%	0.0%	0.0%
# Retained	2,396	2,284	2,565	2,261	1,681	1,642	1,869	2,067	2,352
% Retained	100.0%	100.0%	100.0%	100.0%	100.0%	100.0%	100.0%	100.0%	100.0%
2nd Year									
# Graduated	5	2	3	2	4	0	1	1	0
% Graduated	0.2%	0.1%	0.1%	0.1%	0.2%	0.0%	0.1%	0.0%	0.0%
# Retained	2,020	1,944	2,167	1,827	1,376	1,370	1,592	1,657	1,954
% Retained	84.3%	85.1%	84.5%	80.8%	81.9%	83.4%	85.2%	80.2%	83.1%
3rd Year									
# Graduated	21	22	17	17	12	5	4	6	
% Graduated	0.9%	1.0%	0.7%	0.8%	0.7%	0.30%	0.20%	0.30%	
# Retained	1,757	1,703	1,865	1,615	1,184	1,168	1,368	1,425	
% Retained	73.3%	74.6%	72.7%	71.4%	70.4%	71.1%	73.2%	68.9%	
4th Year									
# Graduated	346	283	298	270	186	157	210		
% Graduated	14.4%	12.4%	11.6%	11.9%	11.1%	9.6%	11.2%		
# Retained	1,538	1,554	1,679	1,454	1,077	1,023	1,231		
% Retained	64.2%	68.0%	65.5%	64.3%	64.1%	62.3%	65.9%		
5th Year									
# Graduated	679	636	699	672	448	415			
% Graduated	28.3%	27.8%	27.3%	29.7%	26.7%	25.3%			
# Retained	1,404	1,444	1,529	1,320	997	967			
% Retained	58.6%	63.2%	59.6%	58.4%	59.3%	58.9%			
6th Year									
# Graduated	919	933	1,027	926	655				
% Graduated	38.4%	40.8%	40.0%	41.0%	39.0%				
# Retained	1,272	1,299	1,423	1,226	911				
% Retained	53.1%	56.9%	55.5%	54.2%	54.2%				
7th Year									
# Graduated	1,026	1,055	1,165	1,031					
% Graduated	42.8%	46.2%	45.4%	45.6%					
# Retained	1,187	1,234	1,343	1,180					
% Retained	49.5%	54.0%	52.4%	52.2%					
8th Year									
# Graduated	1,069	1,109	1,211						
% Graduated	44.6%	48.6%	47.2%						
# Retained	1,163	1,192	1,322						
% Retained	48.5%	52.2%	51.5%						

