

STUDENT WINS INTERNATIONAL U.N. COMPETITION



Flores (left) and Lamar at the U.N.

Graduate student **Tom Lamar** placed first at a United Nations International Design Competition in New York City with his multigenerational design of a Tallahassee city block. He received a \$250 cash prize and the Albert Bush-Brown Award which is presented to the first-place recipient in memory of Bush-Brown, the U.N.'s first official architect.

Members of the jury heralded the project as "a thoroughly worked-out architectural proposal (that) offers a balanced combination of architectural and social age-integrating approaches."

Graduate student **Johanna Flores**, was a semifinalist in the competition. "Both students' works were very strong, and either of their projects would work well on the downtown site that was selected," said **Mike Alfano**, coordinator of the architecture graduate program.

ALUMNI FIRM STARTS SCHOLARSHIP ENDOWMENT FUND

Ruffin A. Rhodes [B.S. '82, M.Arch. '89] and **Maximiano (Max) Brito** [B.S. '85, B.Arch. '89], proprietors of Rhodes + Brito Architects, Inc. in Orlando, have initiated SOA's first Scholarship Endowment Fund with a contribution of \$1,000. This donation came in addition to the annual sponsorship of the new Rhodes + Brito Scholarship Award—a \$1,000 cash award to a third-year student. (See "1998–99 Student Awards" on page 8.)

"Max and I are quite proud of the education and collegiate experience we received at FAMU's School of Architecture during our enrollment as students.

"We also remember the financial hardship and challenges of many talented students and are excited about the possibilities of assisting them in their desire to become architects," Ruffin said.

These generous and unsolicited donations break new ground in the School's history. The Rhodes + Brito Award is

the first alumni-awarded sponsorship of a student, and their donation to the endowment fund is its inaugural contribution. Both are deeply appreciated by not only the students but the entire SOA faculty and staff.

An endowment fund is officially "established" once the account reaches \$10,000. At that point, an application can be made to the State for matching dollars at the rate of 50 cents for each dollar contributed. When the balance in the account reaches \$5,000, the account begins to accrue interest.

We encourage other alumni and friends of the School to follow the lead of Ruffin and Max and help us begin to earn interest quickly. Only five years are allowed for the account to become fully funded, i.e., to reach the \$10,000 amount for matching funds.

To find out how you can contribute, contact Judy McCalman (850.599.3746 or <jmccalm@famuedu>).



Alumni Ruffin Rhodes (left) and Max Brito of Rhodes + Brito Architects, Inc.

FROM THE DEAN

This has been a banner year for the School of Architecture (SOA) at Florida A & M University. For starters, we are happy to report many of the activities and accomplishments in this inaugural issue of *SOA NEWS*. This effort was made possible through the hard work of the staff, faculty, and students. We intend to continue to publish it twice a year to keep you informed of the activities of the School and news about our alumni and other SOA supporters.

SOA is TWENTY-FIVE YEARS old! During these past 25 years, the faculty, staff, and students have combined their energies and talents to build a program that has provided an outstanding architectural education and service to the state of Florida, the nation, and the world. For the last three and one half years, I have been blessed to be one of its partners. While we have postponed the actual celebration until the spring of 2001 to coincide with completion of the renovation and construction, we will be spending the time between now and then—with your help—planning the events of the celebration.

SOA has over 820 alumni and has awarded 421 B.S. degrees, 303 B.Arch. degrees, 89 M.Arch. degrees, and seven M.S. degrees. With so many alumni, we are anxious to hear about what you are doing and the accomplishments you have made. Let us hear from you by contacting **Judye McCalman**, SOA Information Officer (850.599.3746).

With the addition of the Master of Landscape Architecture program, we are now a multi-disciplinary school. The program began during the 1997-98 academic year, but this year we hired its first permanent Director, **Richard Rome**, and faculty member, **Don Staley**. We anticipate awarding M.L.A. degrees to its first graduates this academic year. Also, SOA's five-year strategic plan calls for the implementation of an undergraduate program in Industrial Design. Planning for the implementation of this degree program is currently underway.



The Dean and new faculty (L-R): Don Staley, Arleen Pabón, Dean Wright, Valerie Goodwin, and Richard Rome.

Changes continue to occur at SOA. Prof. **Ronald Shaeffer** and Assoc. Prof. **George Dombek** have started to phase into retirement after a combined total of 34 outstanding years of teaching and service to the University. Both will remain active with SOA, however, by teaching up to a semester a year during the next five years. We welcome new faces to the teaching faculty—Prof. **Arleen Pabón**, Ph.D. teaching architectural history, and Asst. Prof. **Valerie Goodwin** teaching design studio and professional practice. Other new members of the SOA family include **Huimin (Pat) Ding**,

Specialist in Computer Research, and **Chiquita Mordica**, Senior Secretary to the faculty.

We have just completed our self-study, the *Architectural Program Report*, in anticipation of our National Architectural Accrediting Board reaccreditation visit in the fall of 2000. We will keep you informed about the visit, the activities associated with it, and its outcome.

Please let us hear from you about your thoughts or suggestions on any aspect of the School. We value your input.

Rodner B. Wright, AIA
Dean

SCHOOL RENOVATES AND EXPANDS

Construction has now begun on the renovation and expansion of the School. In 1995 the initial Facilities Program was developed, and in 1996 Barnett/Fronczak of Tallahassee were selected by the Board of Regents as the architects. Biltmore Construction Company serves as the construction manager.

The expansion will provide an additional 35,043 GSF, bringing the total to 98,728 GSF. The concept for expansion focuses on the extension of wings B, C, and D and the enclosure of the north and south courtyards to create interior atrium spaces. A significant upgrade to the building's computer infrastructure is anticipated, with all offices, classrooms, studios and labs wired with fiber optic to the desktop.



The total construction budget is \$8.8 million with a project budget of \$10.9 million. Construction began in June '99 as a three-phase project. Optimum completion is scheduled for December 2000. We hope you will stop by and see the progress when you are in Tallahassee. ❖

This document was promulgated at a total cost of \$1,915.00 or \$.96 per copy to disseminate information about the FAMU School of Architecture.

Reaccreditation Process Underway

The *Architectural Program Report*, a detailed report required by the National Architectural Accrediting Board (NAAB), was submitted by the School in September. The report covered a wide variety of NAAB-specified topics and is the first step of the reaccreditation process for the professional programs in architecture.

In fall 2000, SOA will undergo a three-day on-site review by a selected NAAB Visiting Team. Although the exact dates of the visit have not yet been set, the review team has been named. They are: W. Mike Martin, Ph.D., AIA, Team Chair, representing ACSA; Nestor I. Infanzon, AIA, representing AIA; Jeanine V. Benitez, representing AIAS; Douglas W. Whitney, representing NCARB; and Lance Jay Brown, RA, AIA, representing ACSA.

One of the requirements of the visit is that team members have an opportunity to meet with alumni and local practitioners. If you'd like to be a part of this group, please contact **Enn Ots**, Chair, Accreditation Visit Committee (850.599.3845 or <ennu@aol.com>). We welcome your participation.

Landscape Architecture Program Added

The newly established Master of Landscape Architecture Program has initiated graduate study areas in Community Planning, Design, and Preservation, with focus areas in both waterfront communities and sustainability. Working with state and local groups, the Program's faculty and students are involved not only in practical applications but also with the implications of scholarly research in community-based landscape architecture.

Landscape architects work within widely varied professional settings that include both public agencies and private corporations. Florida has led the U.S. in the number of landscape architects registered to practice, and it

has one of the largest chapters of the American Society of Landscape Architects. Students in the program benefit from the wealth of opportunities present for landscape architecture research and practice in the North Florida environment.

The Program offers a first professional degree curriculum with two tracks: one is designed for students who have a related undergraduate degree, and the other is for students whose undergraduate degree is in an unrelated discipline. The curriculum is focused on Community Planning, Design, and Preservation, and all students are required to complete a thesis as part of the requirements for graduation.

Two new faculty were added to the program this year—**Richard Rome** as Associate Professor and Director, and **Don Staley** as Assistant Professor.

Jax AIA and The St. Joe Co. Sponsor Studio

Although SOA graduate students have been involved in a studio project in Jacksonville for several years, the 1998-99 project was particularly successful. SOA alumnus **Clifford Duch** [B.Arch. '87], principal in Cronk, Duch, Miller Architects, served as the coordinating liaison between the AIA

chapter and The St. Joe Company, a new corporate sponsor. Duch's efforts throughout the project ensured a productive and enjoyable program.

St. Joe provided lodging and travel for the students, jurors from their professional staff, and financial support. The final presentation to city officials, Jacksonville architects, and community leaders, was held April 30 at the St. Marco Theater (also compliments of St. Joe).

Three design awards were presented by the AIA. **Darren Lueddecke** received the Honor Award for his Regional School of Music project. **Peyman Ata-Abadi** and **Ryan Simmons** each received Honorable Mention Awards.

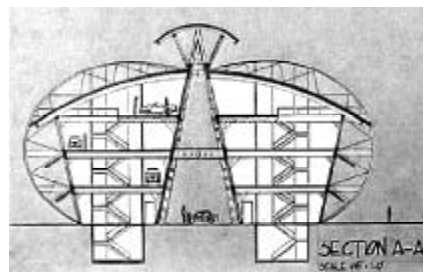
New Downtown Studio

While the campus facility is under construction, all the graduate programs are housed in a downtown studio located at 115 N. Monroe St. This new visibility will allow the programs to become stronger in the area of community design assistance. The space is currently leased for two years. We hope, however, that we will be able to continue a presence in the downtown community through maintaining either a design studio or developing a community design center.

CoFA '99: Connecting to Florida Architecture

During the last three weeks of July, the School presented "CoFA '99," a residential summer program for high school students. Developed and coordinated by Asst. Prof. **Andrew Chin**, the workshop included free-hand drawing and model-building exercises, computer sessions, field trips (Atlanta, Jacksonville, and Seaside), office tours, architectural history lectures, full-scale construction events, and the challenges of working with a design team. Final projects were presented in a critiqued exhibit. Graduate and upper-division students served as teaching assistants and dorm counselors.

CoFA '99 cont'd. on page 4



Museum of Automotive Technology, Tom Lamar.



Infill townhouses, Peyman Ata-Abadi.

Faculty Hires: The search last year resulted in the hiring of four tenure-track faculty, two in the landscape architecture program and two in the architecture program. **Richard C. Rome**, ASLA is an Assoc. Prof. and Director of the Landscape Architecture Program and comes to the School from the University of Texas at Arlington. He holds a M.L.A. from the University of Texas at Arlington and the B.L.A. from Louisiana State. Asst. Prof. **Donald J. Staley**, ASLA comes to us from Texas Tech University. He holds a M.L.A. from the University of Georgia and a B.S. from Purdue University.

Prof. **Arleen Pabón**, AIA, joins the architecture faculty from the University of Puerto Rico teaching in the area of

architectural history. She holds a Ph.D. from Northwestern University and a J.D., M.Arch., and B.E.D. from the University of Puerto Rico. **Valerie Goodwin**, AIA, joins the architecture faculty as an Asst. Prof. teaching design and professional practice after having been a visiting faculty at FAMU for the past three years. Her M.Arch. is from Washington University, and she holds the B.A. in Architecture from Yale University. **Daniel Donovan**, a local architect, has also been hired as a Visiting Asst. Prof. teaching design and graphic presentation. He has previously taught at Tulane, Harvard, and most recently in our new Landscape Architecture Program.

Sabbaticals & Leaves: **Peter Stone** is on a one-year sabbatical to resume practice and complete a book on materials and methods of construction. **Richard Dozier** is completing a one-year leave spent developing an encyclopedia of African-American architecture for the W.E.B. Dubois Center at Harvard University. **Walter Grondzik** is on a one-year leave as a Visiting Prof. at the University of Oregon in Eugene where he will teach environmental control system, studio, and lighting courses.

Retirements: **George Dombek** and **Ron Shaeffer** have elected to begin phased retirement in fall 1999. They have the option of returning to teach one semester per year for the next five years.

FACULTY cont'd. on page 6

CoFA'99 cont'd. from page 3

Through CoFA, SOA seeks to clarify the unique subject areas within an architectural education as well as to introduce the diverse challenges of professional practice. In the process, students develop their oral, written, graphic, and three-dimensional presentation skills as well as increase their appreciation for architectural history. The program was funded by the FAMU Title III Program, the Florida Department of Education, and the School. For more information about this or future summer programs, please contact **Andrew Chin** (850.599.3757 or <achin@famuedu>).

Institute for Building Sciences

IBS is involved in several service and research projects that focus on increasing the sustainability and overall performance of buildings and the well-being and productivity of their occupants. The common thread within these efforts is fostering the unrestricted flow of accurate information among all parties involved in building design, delivery, and operation. As one might expect, the Internet is the medium by which this communication occurs.

To see what's been happening over the past few years in this area, check out the *Florida Design Initiative* at <<http://fdi.state.fl.us>>, and the *Built Environment Center* at <<http://bec.state.fl.us>>.

Institute faculty and students also maintain sites for the Association of Collegiate Schools of Architecture at <<http://www.acsa-arch.org>> and the National Organization of Minority Architecture Students at <<http://www.noma.net>>.

Lecture and Exhibition Series

The 1998–99 Lecture Series brought a diverse group of individuals to the School to speak to and interact with students. Three of the speakers are alumni who are now in private practice. **Akin Akinyemi** [M.Arch. '88] is the principal of Akin & Associates in Tallahassee, and **Ruffin Rhodes** [B.S. '82, M.Arch. '89] and **Max Brito** [B.S. '85, B.Arch. '89] established Rhodes + Brito Architects in Orlando. The students also heard from Modupe Arthur (Strollo Architects, Inc., Tampa), Rodolfo Machado (Machado and Silvetti Associates,

Inc., Boston), and Peter Waldman (University of Virginia, Charlottesville). In addition, 15 candidates for architecture and landscape architecture faculty positions gave lectures as a part of the search process.

Three alumni were featured in the Fall '99 Lecture Series: **Charles Olsen** [B.S. '94, M.Arch. '96], "Traditional Patterns in Residential Architecture"; **Alberto Vargas** [B.S. '93, M.Arch. '95], "Brick by Brick: The Urban Evolution of Winter Park"; and **Ivo Fernandez** [B.Arch. '96], "Retail and Entertainment Architecture: Place, Image, and Form."

Six exhibitions filled the gallery during the year:

- AIA Design Awards, City of Tallahassee Project (B.Arch. and M.Arch. students)
- Community and Visions: Images by Self-Taught Artists (regional folk artists)
- Faculty Travel (SOA faculty)
- Student Work (SOA students)
- The Line and the Circle: Process Drawings (SOA faculty and local architects).

With the building under construction, we were not able to offer an exhibition series this year. ❖

Professional Notes

The Florida Association of Black Architects/NOMA was founded in May 1999 in Orlando. Six of the 11 founding members—and three of the officers—are FAMU alumni. They are: President **Timothy Johnson** [B.Arch.'98], Moody, Nolan, Johnson; Treasurer **Jeffery Bush** [B.S.'95, M.Arch.'98], HKS Architects, Inc.; Secretary **Reginald (Reggie) Cox** [B.S.'95, B.Arch.'97], Sverdrup CRSS; **Tamara Davis Cox** [B.Arch.'97] formerly with Spilliss Candela and Partners; **Tiombe Jenkins** [B.S.'93, M.Arch.'96], Sverdrup CRSS; and **Sidney Smith** [B.Arch.'95], HKS, Architects, Inc.

While working with Duckett and Associates in Atlanta, **Shaun Lattimore-Martin** [B.Arch.'95] led a design team that won an "Honorable Mention" and a \$300 prize in a national competition on housing. Shaun now works for Goode Van Slyke Architecture and lives in Smyrna, Georgia.

Marriages

Keino Furbert-Jacobs [B.Arch.'97] and **Daya Bates** [B.S.'97] were married on June 12, 1999. The couple lives in Orlando.

Reggie Cox [B.S.'95, B.Arch.'97] and **Tamara Davis** [B.Arch.'97] were married January 1, 1999 and now have a baby girl, Akylah Reiyani. The family lives in Orlando where Reggie is employed with Sverdrup CRSS and is pursuing an MBA at the University of Phoenix South Orlando campus.

Deaths

Mark A. Jurgrau [B.Arch.'89] was buried on September 11, 1999. He is survived by his parents, his wife Sharon, and their three-year-old daughter Megan. The family lived in Pembroke Pines, Florida.

SOA New Alumni

Sixty-one degrees were awarded during the last academic year. SOA congratulates and welcomes each of these students to the ranks of the alumni.

FALL 1998

Bachelor of Science

Jason Boehner
Augustus Cooper
Demiko Richardson

Bachelor of Architecture

Stephen Hart

Master of Architecture

Howard Knight
John Lane
Edward Rankin
Donald Swaby

SPRING 1999

Bachelor of Science

Roosevelt Bivens
Tymothi Coffee
Mark Cohen
Aaron Coy
Darin Cushing
Sergio De Santo
Matthew Dresser
Darius Ervin
Rhonda Hammond
Monifa Hendrickson
Samuel Horton
Steven Issacson
Nerissa Jemmotte
Gregory Johnson
Michael Johnson
Michael Lilly
Francisco Simmons
James Spencer

Bachelor of Architecture

Joseph Belluccia
Kenneth Cureton
Darius Ervin
Rhonda Hammond
Richard Headland

(Spring '99 B.Arch. cont'd.)

Monifa Hendrickson
Samuel Horton
Gregory Johnson
Michael Johnson
Michael Lilly
Demiko Richardson
James Spencer
Jerry Thomas

Master of Architecture

Michael Alford
Darrin Blankenship
Thomas Deckert
Elise Edwards
John Lyon
Howard Robertson
Javier Torres
David Wood

Master of Science

Raymond Jonas

SUMMER 1999

Bachelor of Science

Philip Acheampong
Peter Anderson
Randy Gooden
Angela Hatcher
Basil Hylton
Noaman Louah
Cicely Williams

Bachelor of Architecture

Jermaine Deveaux
Steven Issacson
Kendrick Williams

Master of Architecture

Christian Pena
William Walker
Donald Williams

Alumni, we want to hear from you!

Please keep us posted on where you are and what you're doing. We'd like to see much more alumni news in the next issue. Also, if you know of someone who did not receive this issue but should have, please let us know so we can correct our database. Contact Judy McCalman, 850.599.3436 or <jmccalm@famuedu>. Thank you.

(Cont'd. from page 4)

Service: The National Architectural Accrediting Board (NAAB) elected Dean **Rodner Wright** to serve as its President-elect. In October 2000, Dean Wright will become President of the Board. **Roy Knight** has concluded a three-year service in the presidency of the AIA/Florida. He served as First V.P./President-elect during 1997, President during 1998, and on the Executive Committee as Immediate Past President during 1999. Knight also served on the jury for the AIA/Puerto Rico Design Awards. **Tim White** served on a design jury for the Tallahassee Historic Preservation Awards. **Tom Martineau** served on a task force for the Tallahassee Habitat for Humanity chapter to establish a thrift store emphasizing building supplies and home furnishings. **Daniel Donovan** is a member of the board of directors for the LeMoyne Art Foundation and Chair of the Building Committee. **Ron Shaeffer** has joined two working groups in the International Association for Shell and Spatial Structures (IASS)—WG-17, History, and WG-6, Tensile Membranes. He met with them at a recent IASS Congress in Madrid.

Consultancies: **Tim White's** recent consultancy to the Florida Dept. of Juvenile Justice (DJJ) involves three studies for the Dept.: "Design Guidelines for Juvenile Detention Facilities," "Guidelines for Conducting Post-Occupancy Evaluations of DJJ Facilities," and a "Post-Occupancy Evaluation of Orange Regional Juvenile Detention Facility." Over the summer, Tim offered continuing education workshops on Project Programming to architects and interior designers in Tallahassee, Tampa, Orlando, Ft. Lauderdale, Palm Beach, and Miami. **Thor Mann** was an invited lecturer at the "Gesellschaft für Mathematik und Datenverarbeitung" in Bonn, Germany. His lecture was "The Development of the Argumentative Model of Design and Related Work on the Evaluation of Arguments in Design Discourse."

Conferences: **Andrew Chin** authored two papers published by the ACSA. His paper on "Ethnicity and Urban Form" was presented at both the ACSA SE Regional Meeting in San Juan, Puerto Rico, and the NW Regional Meeting in Portland, Oregon.

Another paper, "Beginning with the Margin," was presented at the ACSA Beginning Design Student Conference in Las Vegas, Nevada. **Thor Mann** served as Conference Organizer for the 30th annual conference of the Environmental Design Research Association (EDRA). He gave the welcoming address, presented two papers, and edited the conference *Proceedings* as well as writing its "Introduction." Thor also attended the International Conference on Engineering Design (ICED) in Munich, Germany to present a paper on "Action Learning Environments" coauthored with Barbara Lay, Motorola University, and **Enn Ots**. **Tim White** is presenting a paper on "Design Precepts" and conducting a workshop on "Conceptual Perspectives" at the January 2000 Design Communication Conference in Tucson, AZ. **Eduardo (Lalo) Robles** authored two papers that have been presented at two conferences. "Roostertown Community Garden" was presented at the 30th annual conference of the Environmental Design Research Association (EDRA) in Orlando. That paper and "Urban Identities of Latin American Cities" were also presented at the Association of Collegiate Schools of Architecture (ACSA) Southeast Regional Meeting in San Juan, Puerto Rico. **LaVerne Wells-Bowie** is the national co-chair for the 88th ACSA Annual Meeting to be held in Los Angeles in March. The theme is "Heteropolis: Immigration, Ethnicity, and the American City."

Creative Activities: Two quilts designed and constructed by **Valerie Goodwin** were exhibited at the Florida Museum of History. One of the quilts, "Wucius Wong's Jungle Boogie," also won "Best of Show" at "Creative Tallahassee," a juried art show at City Hall.

Research: **Arleen Pabón** has received a grant from the National Park Service to work on documentation of Spanish missions in La Florida. She is also finishing a study for the Puerto Rico Society of Historic Preservation Office on military bases, their architectural and "urban" evolution, and their cultural interpretation. **Daniel Donovan** is currently involved in research into designating the Myers Park neighborhood in Tallahassee as an historic district. **Larry Peterson** has received a \$400,000 grant from the Florida Dept. of Community Affairs for phase two of the *Sustainable Communities Demonstration Project*. (For more on research, see "Institute for Building Sciences," on page 4.)

Staff News: Several changes and additions have been made to the professional staff. Following Bill Wiencke's departure to the University of W. Ga., **Huimin (Pat) Ding** was hired for the development and maintenance of SOA's computer hardware and software systems, including the establishment of the local area network (LAN) for the renovated facility. **Shirley Johnson** was promoted to the position of Coordinator of Student Support Services and serves as SOA's "registrar." **Judye McCalman** has assumed responsibility for the development of a fund-raising plan and strategy as well as serving as the SOA information officer.

Last January, SOA sponsored a multipurpose field trip to Atlanta for the entire support staff. They visited the Turner and Associates architecture firm and were treated to a lecture about the firm, its employees, and its management systems; a tour of their offices and some of their built projects in the downtown area; and dinner. In addition, the group took a tour of historic Atlanta and the Martin Luther King, Jr. Center.

Chiquita Mordica has been hired as the new Faculty Secretary. ❖

New Design Book

Tim White has recently published a book entitled *Path • Portal • Place: Appreciating Public Space in Urban Environments*.

The book presents taxonomies for describing public spaces and ways of understanding and appreciating them. For more information, call Architectural Media, Ltd., 850.222.1223.

MASTER'S THESES

Hearty congratulations to all the students who have traveled successfully down the long road toward the professional master's degree. Below are the authors and titles of the theses completed in the last academic year.

FALL 1998

HOWARD KNIGHT, *Contemporary Environmental Art as a Theoretical Intervention: Expanding Concepts of Connecting Architecture to Site.*

EDWARD RANKIN, *Proposal for the Digital Presentation of Architectural Programs.*

SPRING 1999

MICHAEL ALFORD, *Energy-Efficient Architecture: Vertical Expressions of Passive Architectural Responses to Energy Issues in Sub-Tropical Regions.*

DARRIN BLANKENSHIP, *Church for the Panama City Beach Strip: A Synthesis of Commercial Communications Systems and Spiritual Space.*

THOMAS DECKERT, *The Integration of a Computer-Based Automated Programming Process into the Process Utilized by the Florida State University Facilities Planning Office.*

RAYMOND JONAS, *The Relationship Between Architecture and Management: An Application of Management Concepts to South African Architectural Practice.*

JOHN LYON, *Architecture As a Vessel of Culture—The Maroons of Historic Jamaica: An Investigation of Cultural Influences on the Identity of Form.*

HOWARD ROBERTSON, *Utopia and Architecture: A Proposal for a Caribbean Immigrant Co-Housing Development in Miami, Florida.*

JAVIER TORRES, *Perceiving Architecture Through the Promenade: A Study of Visual Perception Concepts as Applied to the Design of a Design Center in Winter Park, Florida.*

DAVID WOOD, *Architecture as a Marketing Tool: A Synthesis of Gestalt Principles of Visual Perception and Retail Environments.*

SUMMER 1999

CHRISTIAN PENA, *Zen Attitudes Toward Nature as a Motivator for a More Meaningful Connection Between Architecture and the Natural Landscape: A Retreat Center.*

WILLIAM WALKER, *Facilities Program to Improve Image and Interaction at the National High Magnetic Field Laboratory.*

DONALD WILLIAMS, *An Analysis and Comparison of Current Project Delivery Systems Where the Architect Has a Role as a Team Member and How Teams Can Be Utilized by the State University System of Florida in Achieving Its Architectural and Construction Goals.*

CLASS PROJECTS

Among the studio projects undertaken last year were:

- A study of Chattanooga, including proposals for infill buildings on seven sites in the historic downtown (4.2),
- Proposals for buildings in Frenchtown (3.1), and
- The Tallahassee Museum of Science and History Conference Center (3.2).

Fall '99 projects include:

- A multipurpose pavilion for the Leon County Fairgrounds and an arts and crafts gallery for Seaside (2.1),
- A walking stick and University parking structure (3.1),
- An urban infill project for Savannah (4.1),
- An outdoor Shakespearean theater for Cascades Park (5.1), and
- A multiuse "sliver" building on Monroe St. (6.1).

B.ARCH. FINAL PROJECTS

One of the high points of the close of the academic year is the juries for the fifth-year design projects. As usual, the graduates presented a wide variety of building types for their terminal projects.

JOE BELUCCIA, Tampa hotel

DARIUS ERVIN, marine park

RHONDA HAMMOND, youth center

RICHARD HEADLAND, youth hostel

MONIFA HENDRICKSON, campus student center

SAMUEL HORTON, student residence

GREG JOHNSON, sports world

KENT JOHNSON, Calvary chapel

MICHAEL LILY, football hall of fame

DEMIKO RICHARDSON, child care center

JAMES SPENCER, JR., student center

JERRY THOMAS, urban center

Presenting projects for summer graduation were:

ANGELA COAKLEY, Pentacostal church

AUGUSTUS COOPER, Junkanoo exhibition

STEVEN ISAACSON, cancer treatment center

KENDRICK WILLIAMS, wood competition

STUDENT ORGANIZATIONS

Officers for the 1999-2000 academic year are:

Tau Sigma Delta: Tom Lamar, President; Aaron Cox, VP; Andrea Young, Secretary/Treasurer; and Johanna Flores, Sgt. at Arms.

NOMAS: Naeem Brewington, President; Keith Frazier, VP; Andrea Young, Secretary; and Darlene Patton, Treasurer.

Alpha Rho Chi: Shawn Vann, Worthy Arch.; Rebecca Irving, Worthy Assoc. Arch.; Karla Castellon, Worthy Scribe; Nerissa Jemmotte, Worthy Estimator; and William Santiago, Worthy Superintendent.

AIAS: Tom Lamar, President; Dane Niles, VP; Aisha Densmore-Bey, Secretary; Johanna Flores, Treasurer.

ASLA: Scott Wolff, President.



FALL 1999 FIELD TRIPS As is the custom at SOA, third- and fourth-year students traveled to Alexandria, VA to visit the VPI Consortium. Fourth-year students continued the trip to Philadelphia and Princeton, home of the Michael Graves Product Design Center shown above. The fifth-year trip included stops in Cincinnati, Columbus, and Louisville.



**SCHOOL
OF
ARCHITECTURE**

FLORIDA A & M UNIVERSITY
1936 Martin Luther King Blvd.
Tallahassee, FL 32307-4200

**SOA
NEWS**

NONPROFIT ORG
U.S. POSTAGE
PAID
TALLAHASSEE FL
PERMIT NO. 119

WINTER 2000

1998-99 Student Awards

The tradition of honoring students who have excelled during the year continued with an Honors Ceremony and Lunch held graduation day, May 1, 1999. We are delighted to announce that a new \$1,000 cash award was added this year by **Rhodes + Brito Architects, Inc.**, in Orlando. This award was designated for a "talented and promising student entering the third year of the B.Arch. or B.S. program who is selected by the faculty, pursuing architectural licensure or college teaching, and has financial need." Other donors for cash awards are **Pella Windows and Doors** (\$1,000) and **AIA/Florida Foundation** (\$1,000). Our thanks and deep appreciation go to all the award donors and our sincere congratulations to the students who were selected by the faculty to receive the awards.

AIA Henry Adams Award—M.Arch. ELISE EDWARDS

AIA Henry Adams Award—B.Arch. JAMES SPENCER

AIA Certificate of Merit—M.Arch. MIKE ALFORD

AIA Certificate of Merit—B.Arch. RHONDA HAMMOND

AIA/Florida Bronze Medal JOHN LYON

AIA/FL Cash Award—Continuing Student/Tie: TOM LAMAR, JOHANNA FLORES

Alpha Rho Chi Medal TOM LAMAR

Pella Fifth-Year Jurist Award RICHARD HEADLAND

Graduating Senior with Highest GPA ARRON COY

Most Outstanding Fourth-Year Student FRANCISCO SIMMONS

Fourth-Year Design Award SERGIO DESANTO

History/Theory Award—Upper Division TYRONE CROSBY

Technology Award—Upper Division FRANCISCO TRUJILLO

Most Outstanding Third-Year Student KEN EVERT

Third-Year Design Award MIKE RUIZ

Second-Year Design Award ANNA BARBOUR

DeGraff Memorial Award—Second-Year DERIC HECK

History/Theory Award—Lower Division CHINH CAO

Technology Award—Lower Division MIKE RUIZ

DeGraff Memorial Award—First-Year SHERRISA PHILLIPS

First-Year Design Award CHINH CAO

ARCC King Award ELISE EDWARDS

Rhodes + Brito Award KOLIN GASPAS



Our Web site at <http://www.famu.edu/soa> continues to evolve and improve, and we'd love to have your comments and suggestions. In addition to current student work, we would like to include both the academic and professional work of alumni. Watch the Web site and newsletter for a call for submissions. Please visit us, and while you're there, join our email list.



Florida A & M University is an Equal Opportunity, Equal Access University.